



**Alumil**  
Building excellence every day

**Alumil**  **SUPREME**  
**S650 PH0S**



# CONTENTS

## **SUPREME S650 PHOS**

DESIGN PHILOSOPHY & CHARACTERISTICS	4
SENSE OF FREEDOM	8
ATTENTION TO DETAIL	10
ATTENTION TO SAFETY	13
SECTIONS	14

---

## **SUPREME S650 ECLIPSE**

THE ABSOLUTE MINIMAL DESIGN	28
SECTIONS	32

---

## **SUPREME S650 E-MOTION**

FUNCTIONALITY, CREDIBILITY & COMFORT	34
--------------------------------------	----

---

SECTIONS	38
INSTALLATION	42
APPLICATIONS	48
TABLE OF PERFORMANCE	50

---

## **REFERENCE PROJECTS**

PRIVATE RESIDENCES, VILLAS, RESORTS...	52
--	----



**SUPREME S650 PHOS**  
is the ideal choice for sliding  
windows with wide glazing surfaces  
mounted in aluminium frames  
that are totally flush  
to the ceiling and the floor.

**PHOS** means **LIGHT**

*"Architecture is the learned game, correct and magnificent,  
of forms assembled in the light."*

Bring Freedom

Inside



**Alumil** SUPREME  
S650 PHOS

DESIGN PHILOSOPHY

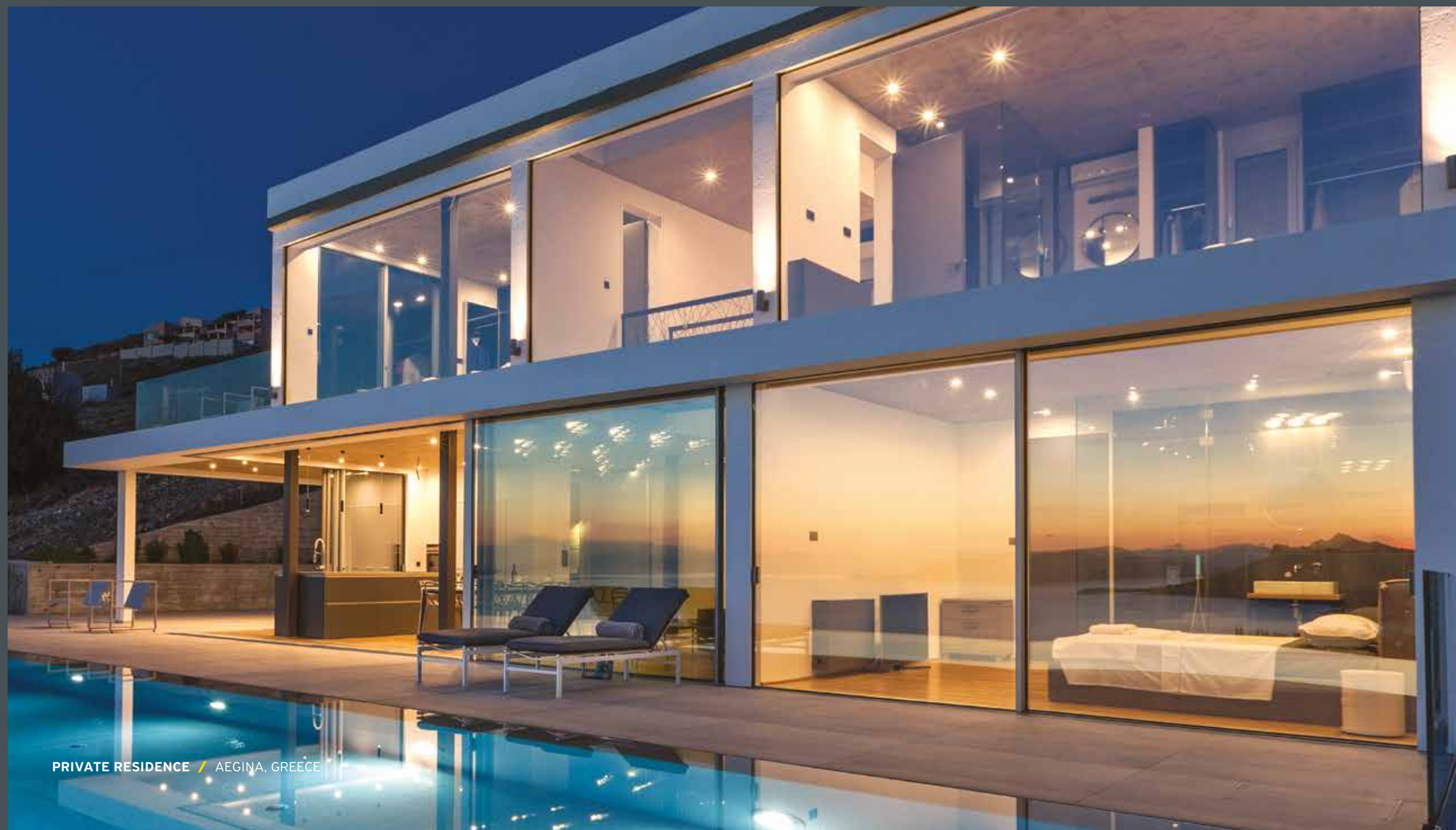
CHARACTERISTICS

Alumil's sliding  
thermal insulating system  
SUPREME S650 PHOS...

Is the ideal solution for projects  
requiring wide spans with **minimal  
aluminium site lines.**

## Massive yet elegant glazing surfaces

- All the aluminum profiles are totally concealed in wall so as to maximize natural light.
- Only 25 mm visible aluminium face width at the interlocking profile.
- Extra concealed profiles available for water drainage.
- Stainless steel rollers for smooth sliding & maximum functionality with high resistance to corrosion.
- Alternative version for top-mounted installation.

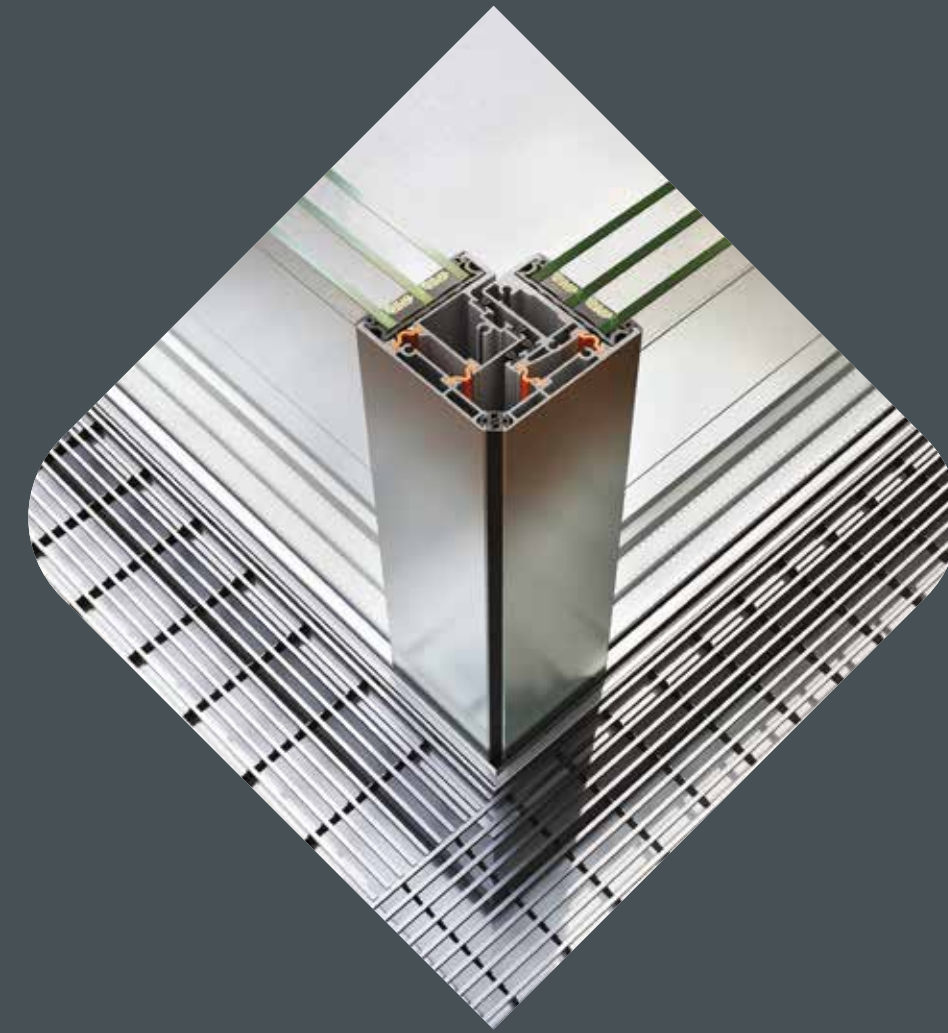




**Alumil** SUPREME  
S650 PHOS

## TECHNICAL

## CHARACTERISTICS



VISIBLE ALUMINIUM FACE WIDTH

**CONCEALED PROFILES**

FRAME HEIGHT

35 / 59 mm

FRAME WIDTH

164 mm

SASH HEIGHTS

22 / 32 mm

SASH WIDTH

62 mm

INTERLOCKING PROFILE WIDTH

25 mm

SASH WEIGHT

1000 Kg

GLAZING

36 / 46 mm

INSULATION

POLYAMIDES, PVC



The limits between interior and exterior  
**are eliminated** as the only aluminium width is

The system's main advantage is the improvement of living conditions by **maximizing the natural lighting and minimizing the visible aluminum face width**, which makes the residents feel closer to the external environment and increases their sense of freedom.

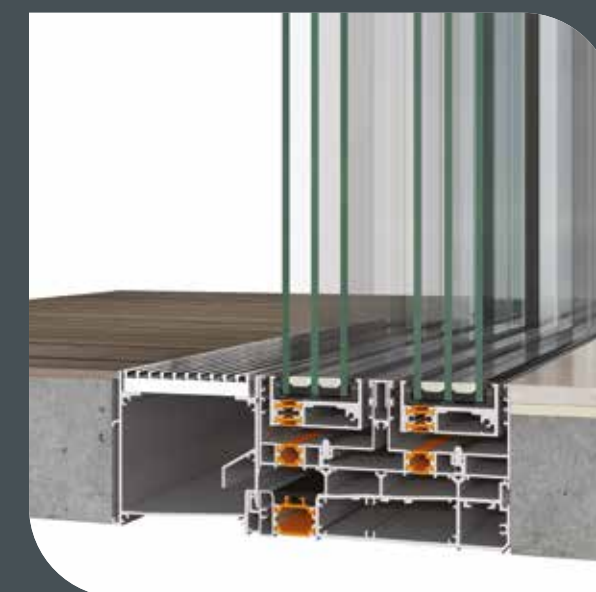
**25mm** at the interlocking profile.





SUPREME S650 PHOS offers a unique combination of **elegance** and **functionality**, satisfying even the most demanding requirements.

ITS MINIMAL DESIGN ALONG WITH THE WIDE GLAZING SURFACES ENHANCE **MAXIMUM VISIBILITY** AND **NATURAL LIGHT** BY USING TOTALLY CONCEALED PROFILES INTO THE WALLS, THE FLOOR AND THE CEILING.



**ALTERNATIVE VERSION FOR TOP-MOUNTED INSTALLATION WITH A LOW THRESHOLD,** a flat track that is addressing safety issues for easy and safe access to children, elders and people with special needs. A more flexible solution ideal for renovations with innovative water drainage.





**Alumil** SUPREME  
S650 PHOS

## ATTENTION

## TO SAFETY

### ROLLERS

Stainless steel rollers ideal for seaside projects. For heavy duty constructions up to **1000 Kg** per sash, offering high functionality & smooth gliding of the sashes.

**CERTIFIED PERFORMANCES TESTED ACCORDING EN 13126-1 AND EN 1670 FOR:**

- CORROSION RESISTANCE
- DURABILITY
- STATIC LOAD
- HARDNESS

### LOCKING SYSTEM

**CERTIFIED PERFORMANCES TESTED ACCORDING EN 13126-1 AND EN 1670 FOR:**

- MULTIPLE POINT LOCKING
- TOP - BOTTOM WITH ROD & ON THE VERTICAL FIXED FRAME WITH BOLTS AND STRIKERS

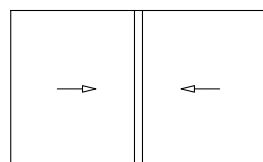
### HANDLES

Branded handles with **ALUMIL** unique design offer high security as they are lockable with key placed on the handle level. In addition, they are very easy to install after transportation on site and can be easily removed for maintenance.



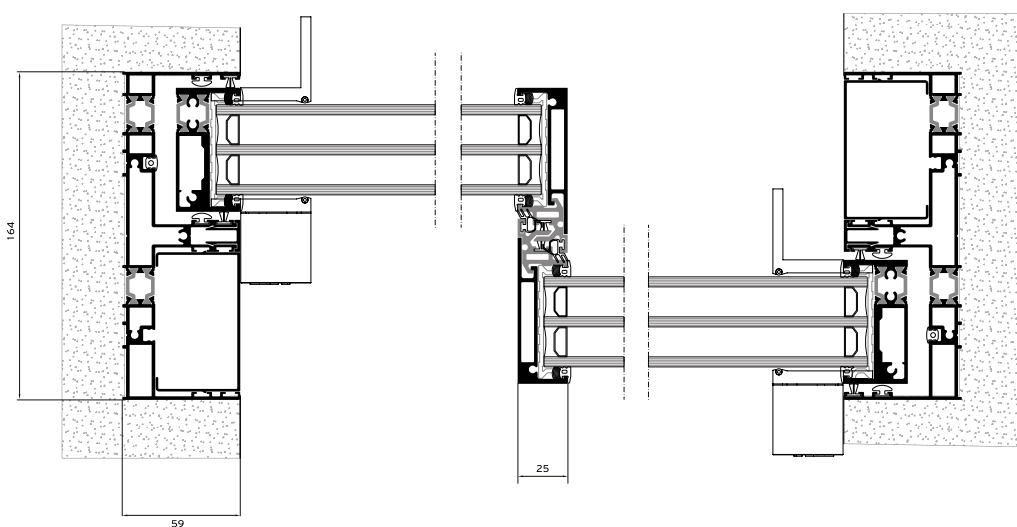
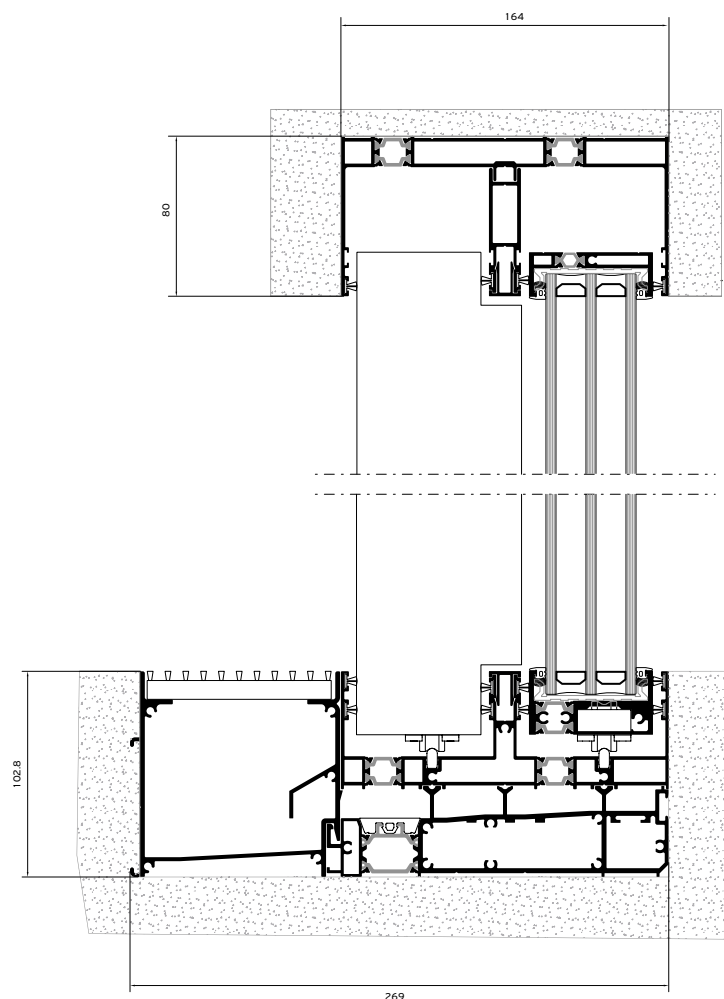


## 2 Sashes / 2 Track

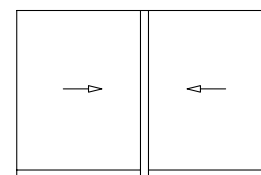


The innovative design of the concealed water drainage system offers excellent performance even under adverse weather conditions.

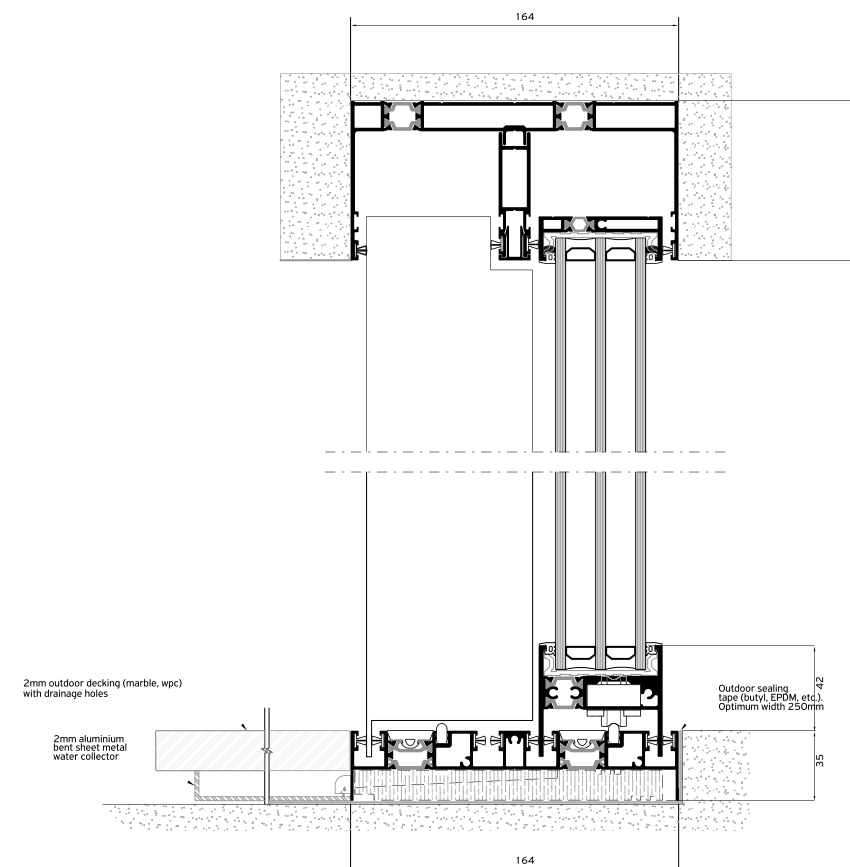
Specially perforated profiles and accessories, assembled together, facilitate the water outflow.



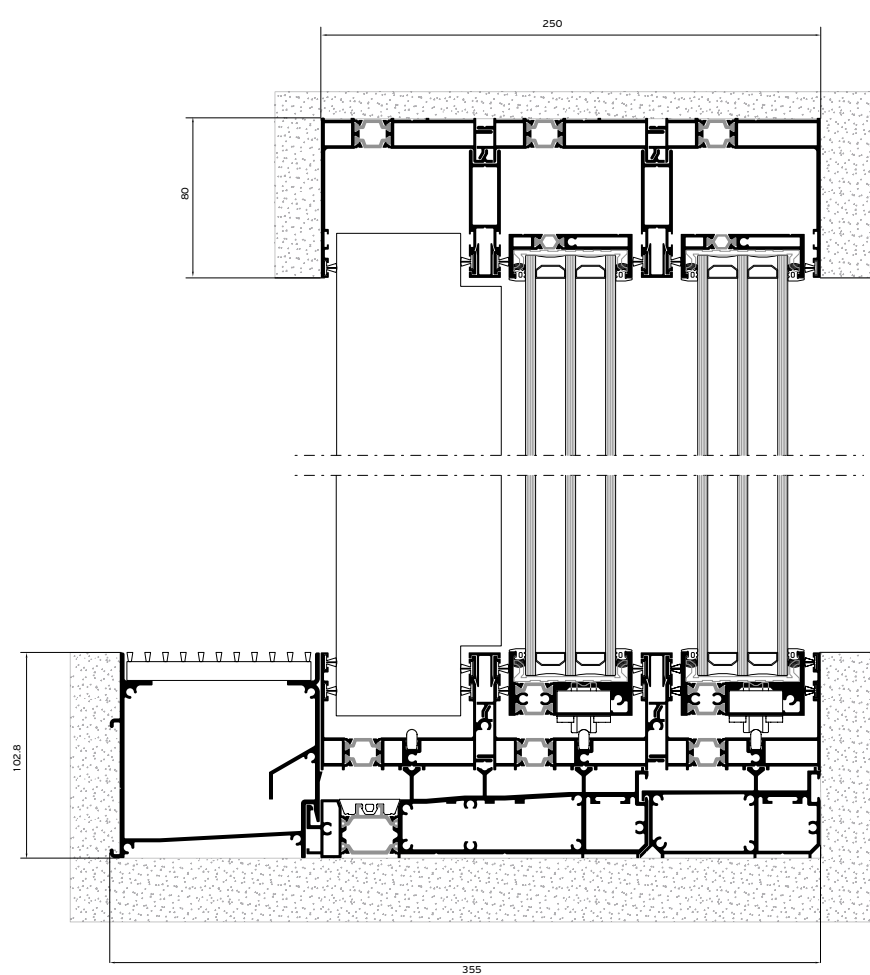
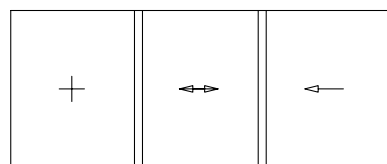
## 2 Sashes / 2 Track Low Threshold



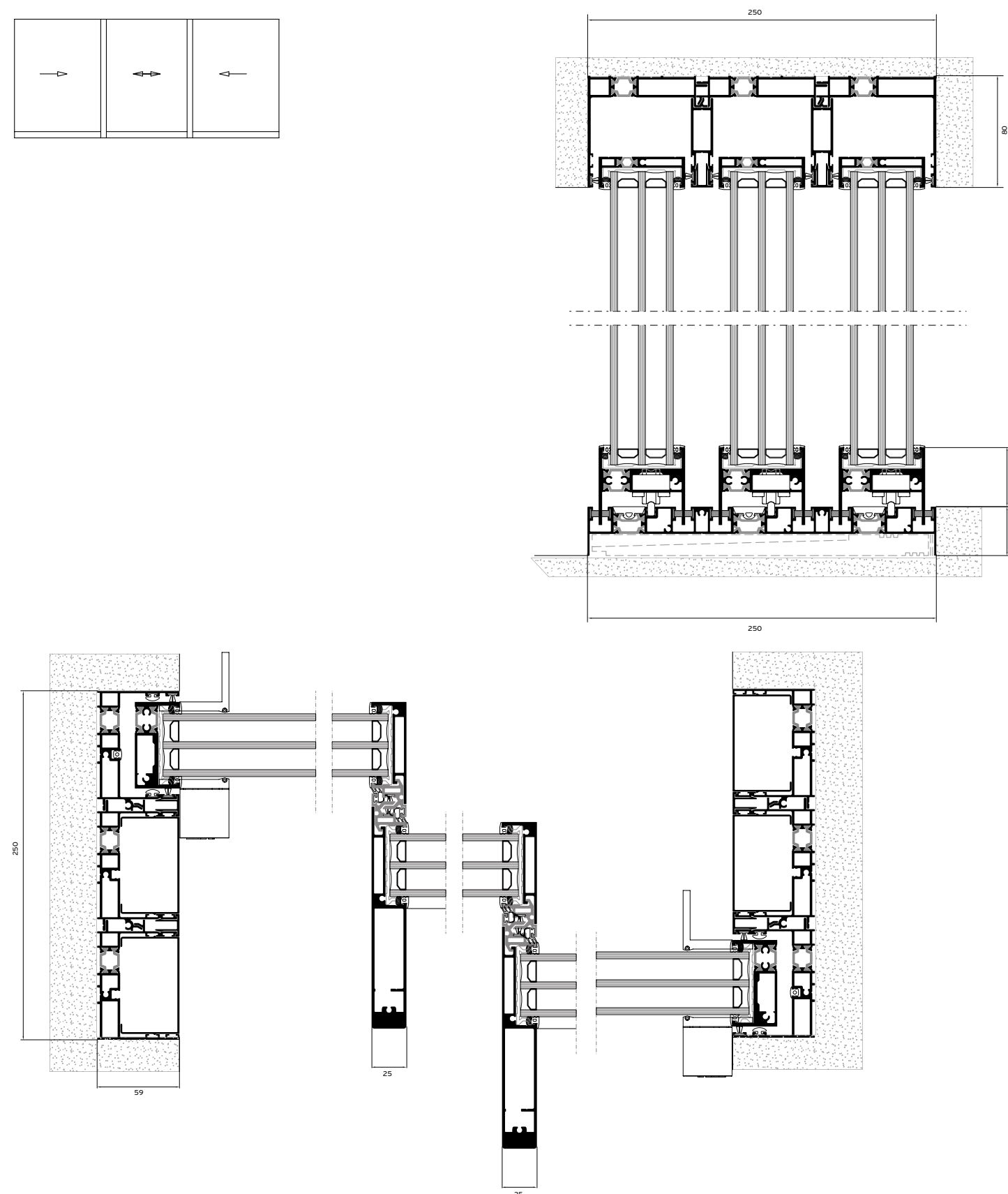
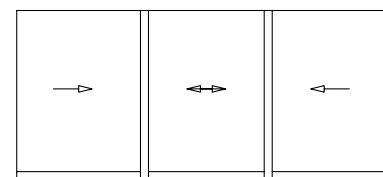
Even when the low threshold is selected for top-mounted installation, there is a special component for the concealed water drainage that offers high watertightness.



**3 Sashes / 3 Track**

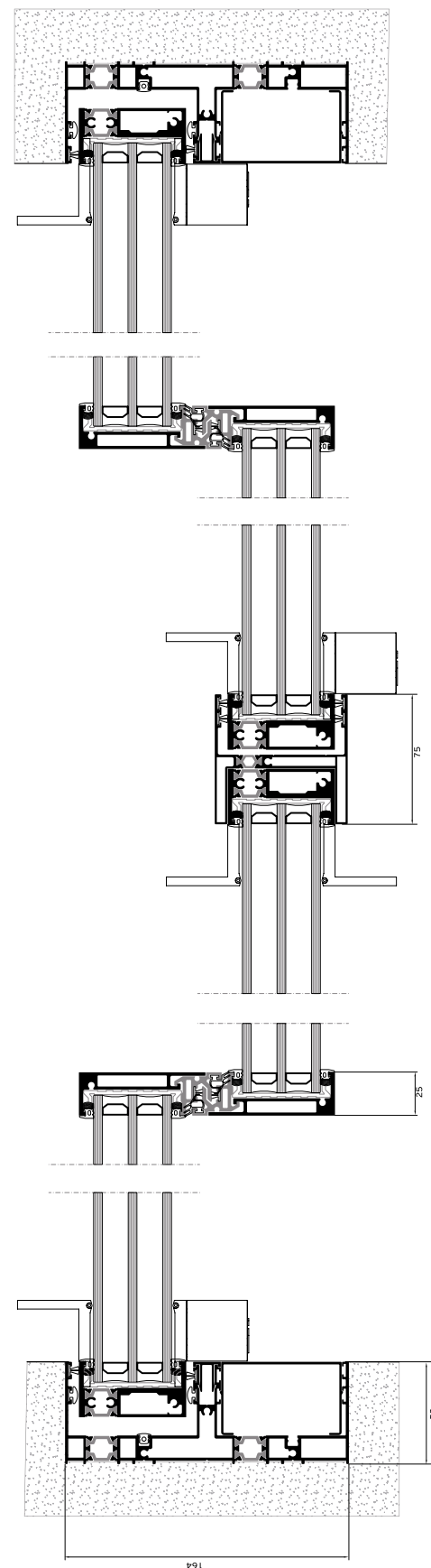
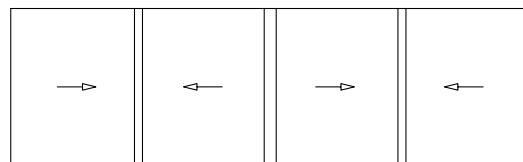


**3 Sashes / 3 Track Low Threshold**

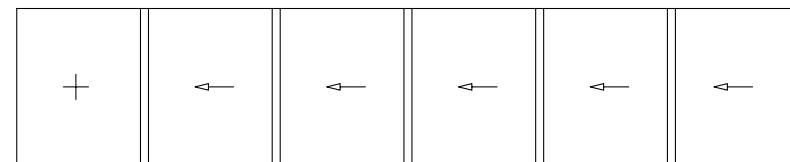




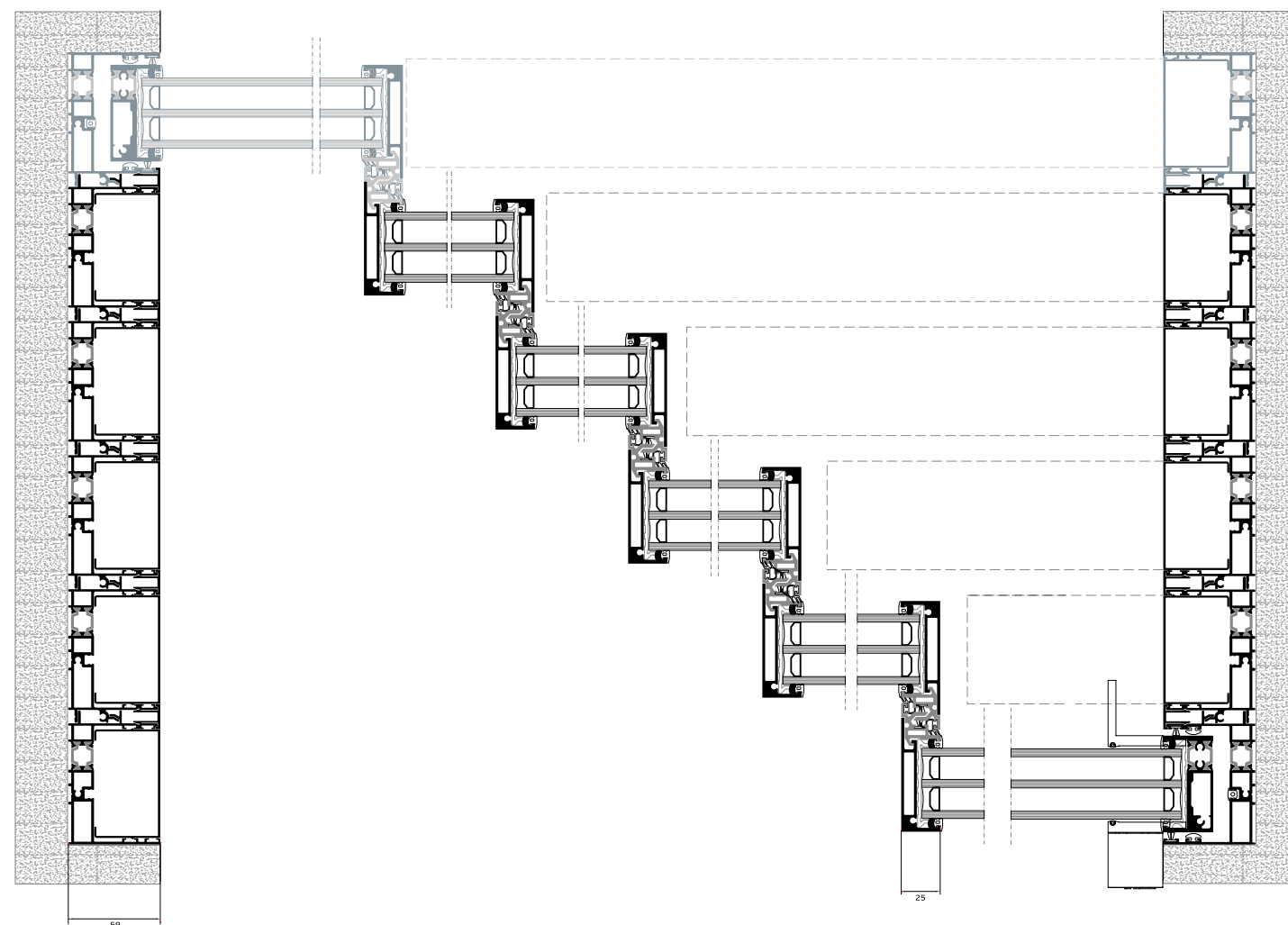
### 4 Sashes / 2 Track



### MULTI TRACK

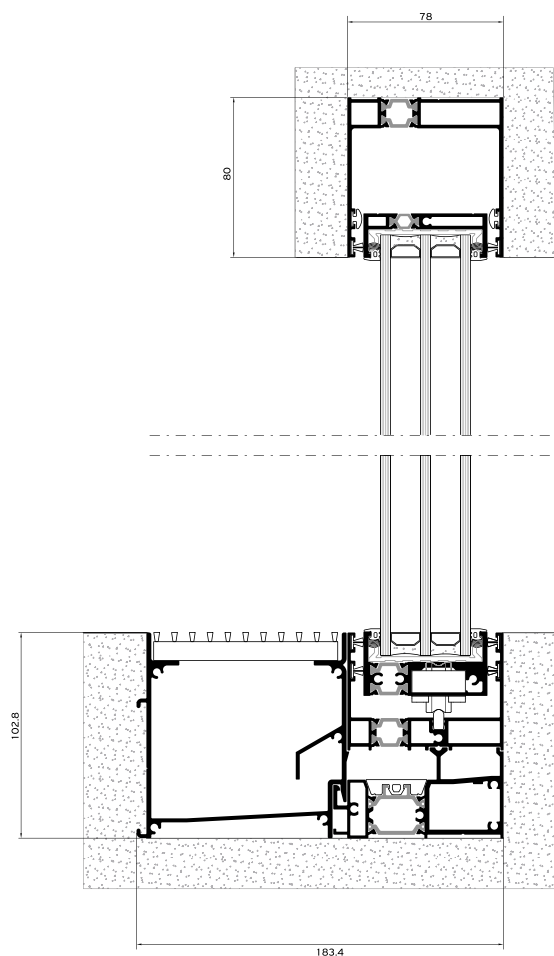
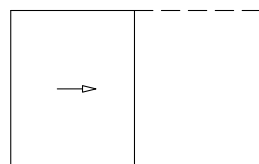


"No limits at the number of the horizontal sashes with the multi track typologies"



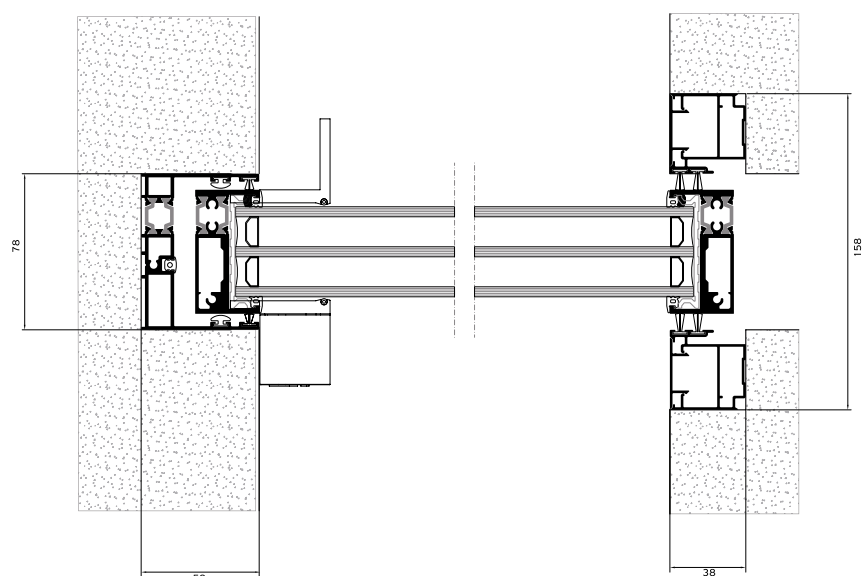
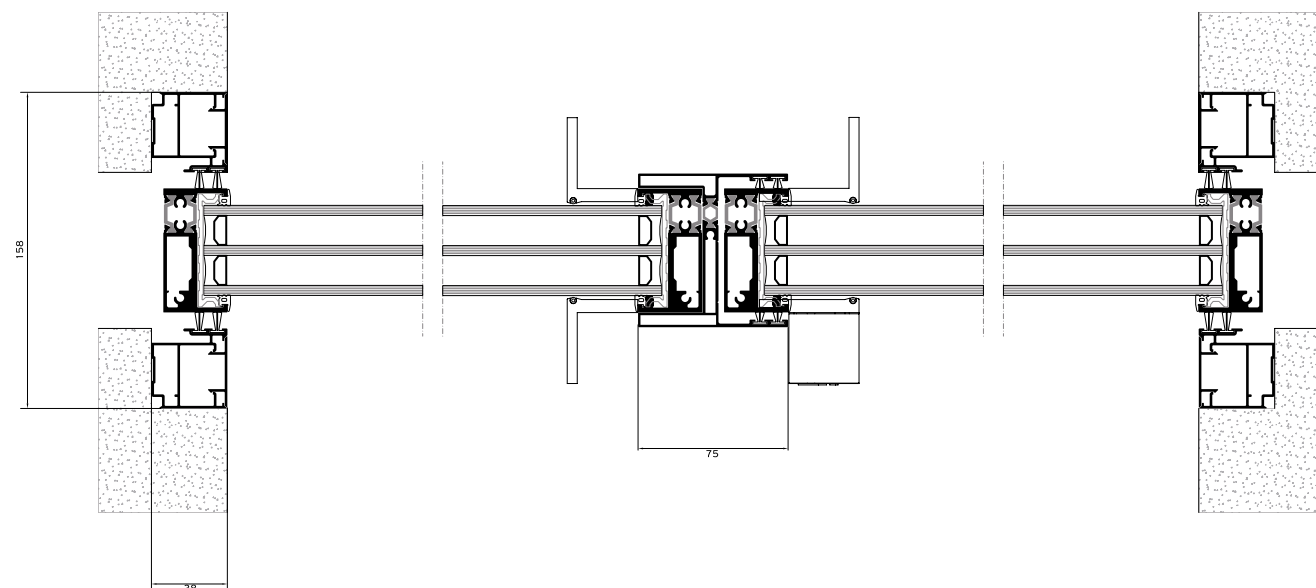
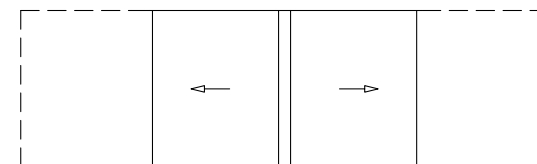
90°  
Rotate the technical drawing  
90° CLOCKWISE IN ORDER  
TO READ IT PROPERLY

### POCKET WINDOW 1 Sash / 1 Track



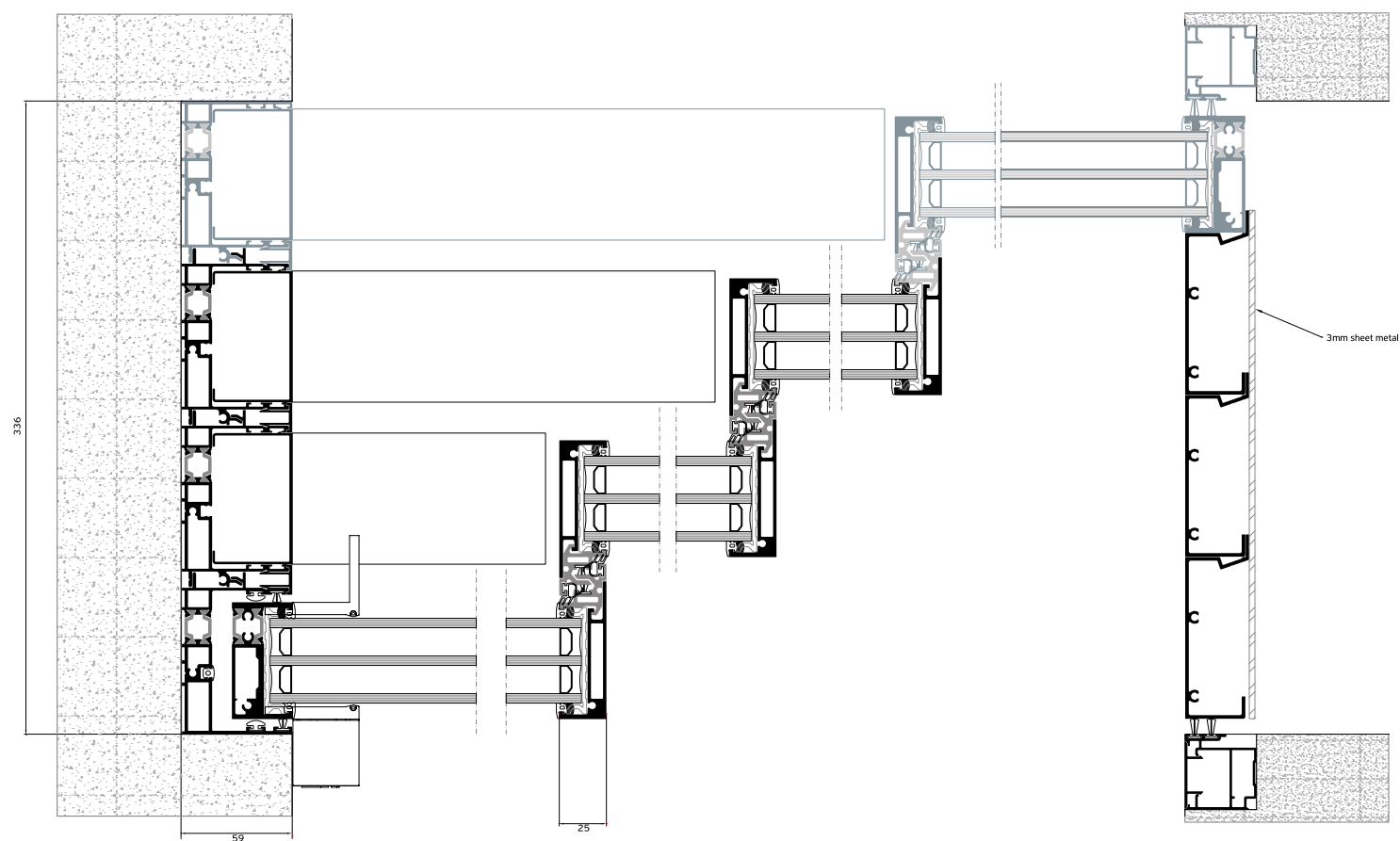
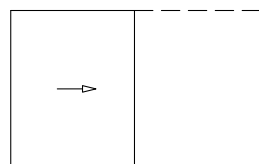
### POCKET WINDOW 2 Sashes / 1 Track

### 2 Sashes / 1 Track

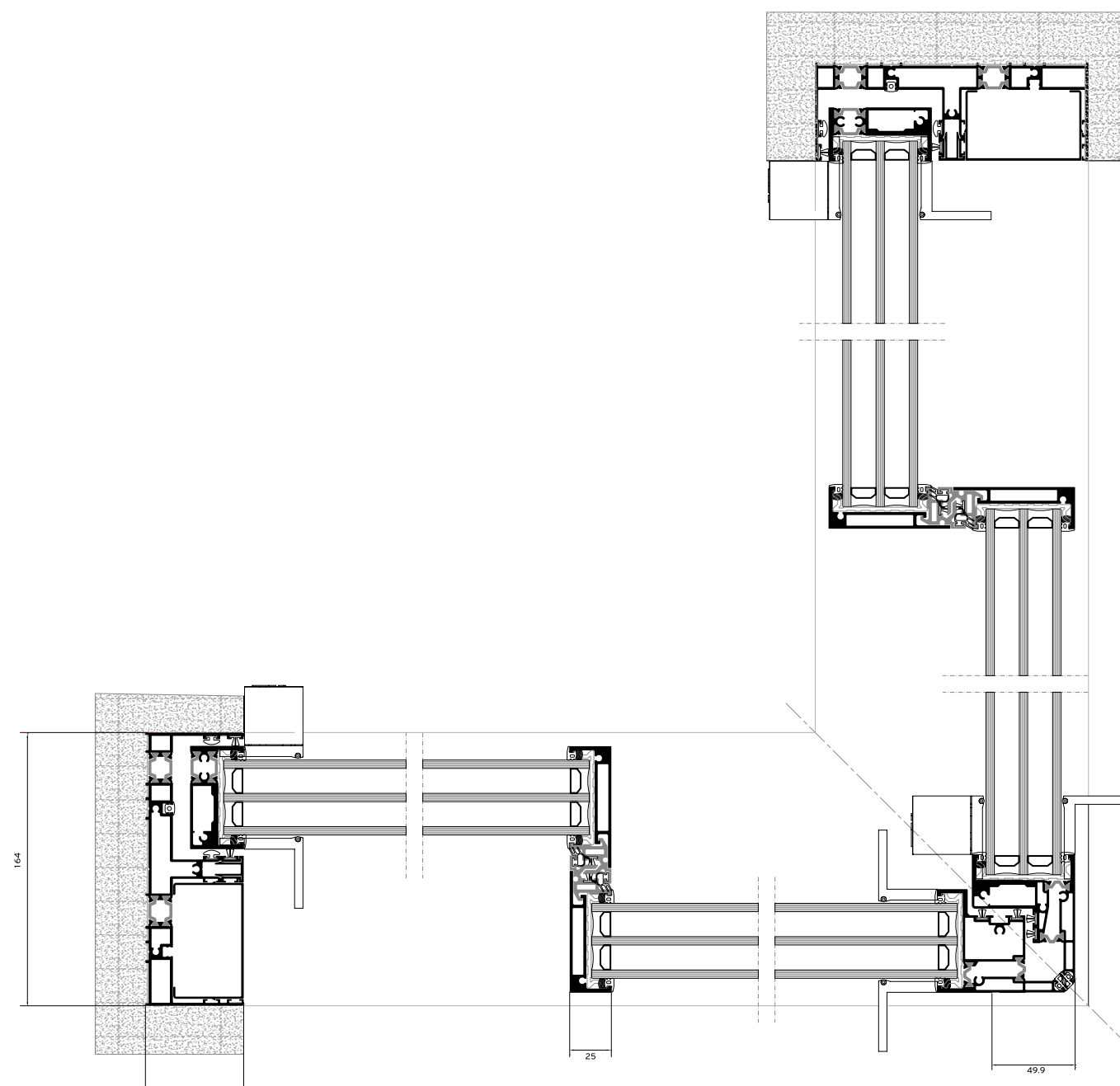
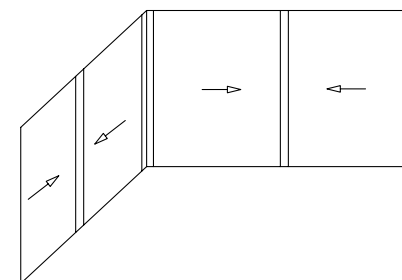




**POCKET WINDOW**  
Multi Track



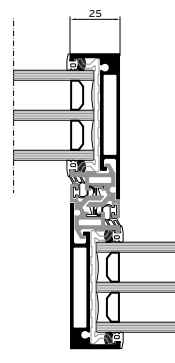
**EXTERNAL CORNER**



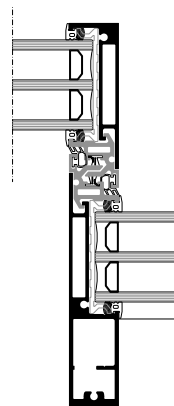
**CORNER CONSTRUCTIONS WITHOUT USING INTERMEDIATE MULLIONS OFFER:**

- MAXIMUM NATURAL LIGHT
- EASY OF ACCESS
- MINIMAL DESIGN
- HIGH FUNCTIONALITY

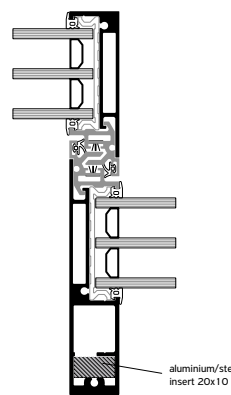
# STIFFENERS



I=34,8 cm<sup>4</sup>

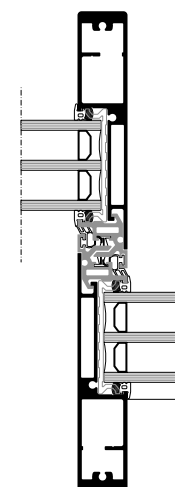


I=101,4 cm<sup>4</sup>

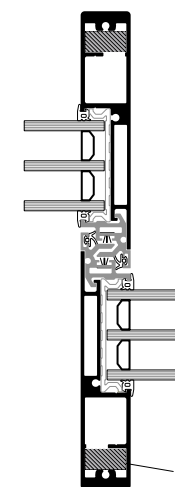


I=114,1 cm<sup>4</sup>

aluminium/steel  
insert 20x10

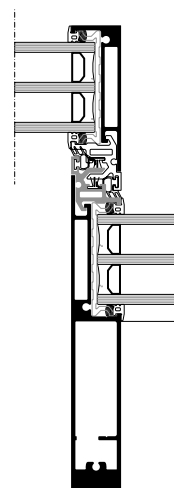


I=168 cm<sup>4</sup>

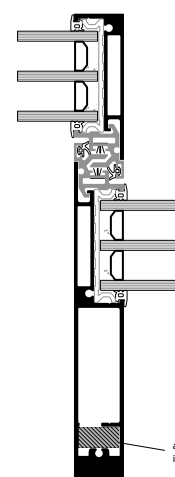


I=193,4 cm<sup>4</sup>

aluminium/steel  
insert 20x10

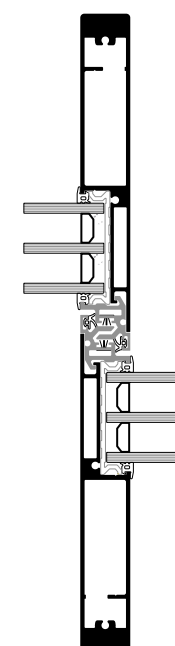


I=245,4 cm<sup>4</sup>

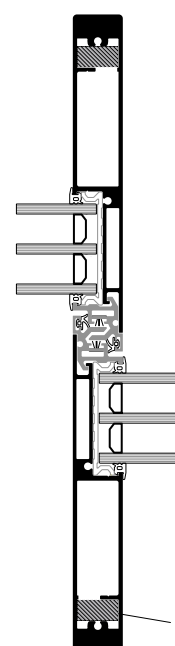


I=267,4 cm<sup>4</sup>

aluminium/steel  
insert 20x10



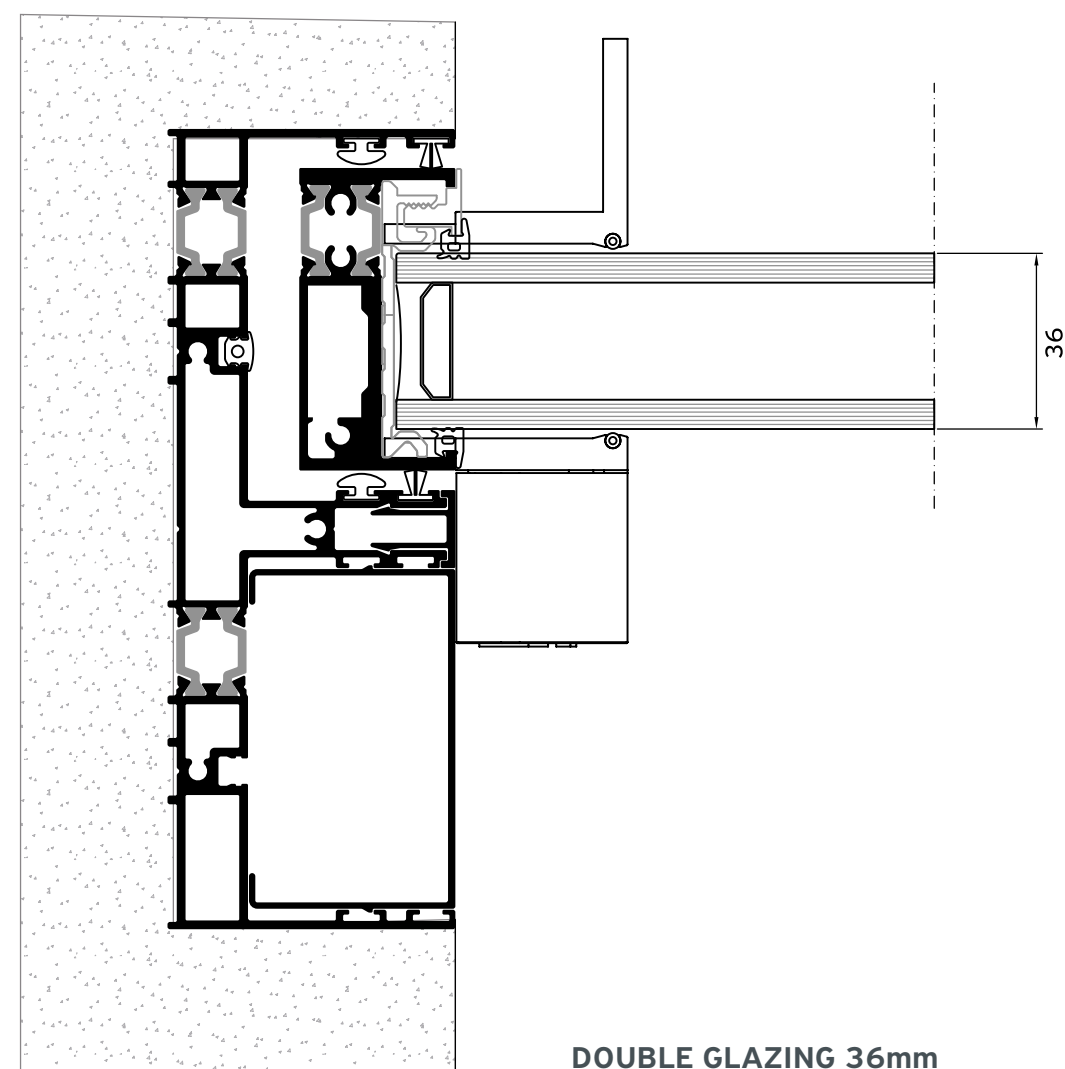
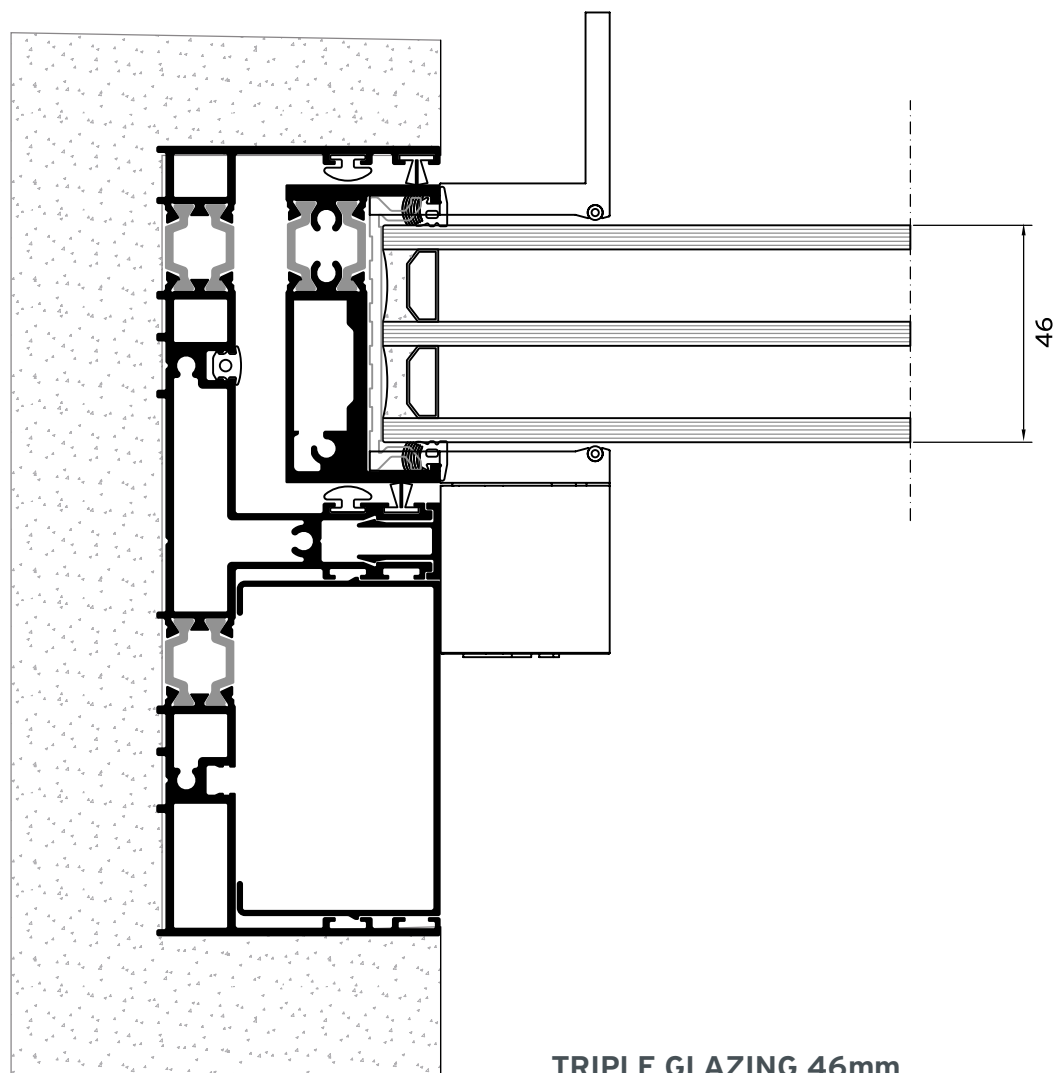
I=456 cm<sup>4</sup>



I=500 cm<sup>4</sup>

aluminium/steel  
insert 20x10

# GLAZING TYPES





# Alumil SUPREME

## S650 eclipse

The innovative invisible track is totally integrated into the floor and covered with the floor finish offering a **flat surface** and creating continuity between the interior and the exterior environment.

## THE ABSOLUT

DESIGNED TO MEET THE ARCHITECTURAL DEMANDS OF MINIMAL THERMALLY INSULATED SLIDING SYSTEMS WITH MINIMUM ALUMINUM SIGHT LINES.

## MINIMAL DESIGN



- Invisible bottom frame totally flush to the floor
- Profiles totally concealed in-wall for maximum natural light
- Only 25 mm visible aluminium face width at the interlocking profile
- Concealed water drainage with high performance
- Stainless steel rollers easily replaced for maintenance
- New inox philosophy for flawless sash gliding & durability overtime

**Alumil** > SUPREME  
S650 eclipse

## TECHNICAL

## CHARACTERISTICS



VISIBLE ALUMINIUM FACE WIDTH

**CONCEALED PROFILES**

FRAME HEIGHT

61 mm

FRAME WIDTH

180 mm

SASH HEIGHTS

22 / 45 mm

SASH WIDTH

62 mm

INTERLOCKING PROFILE WIDTH

25 mm

SASH WEIGHT

1000 Kg

GLAZING

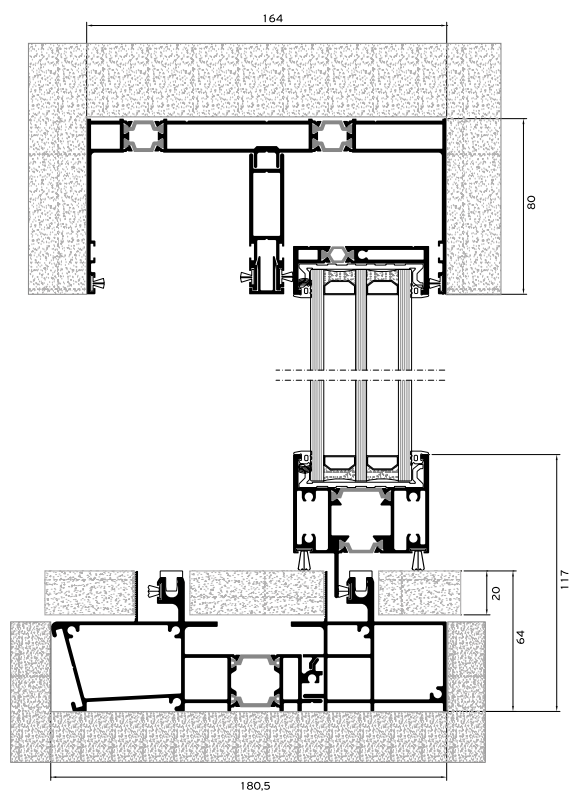
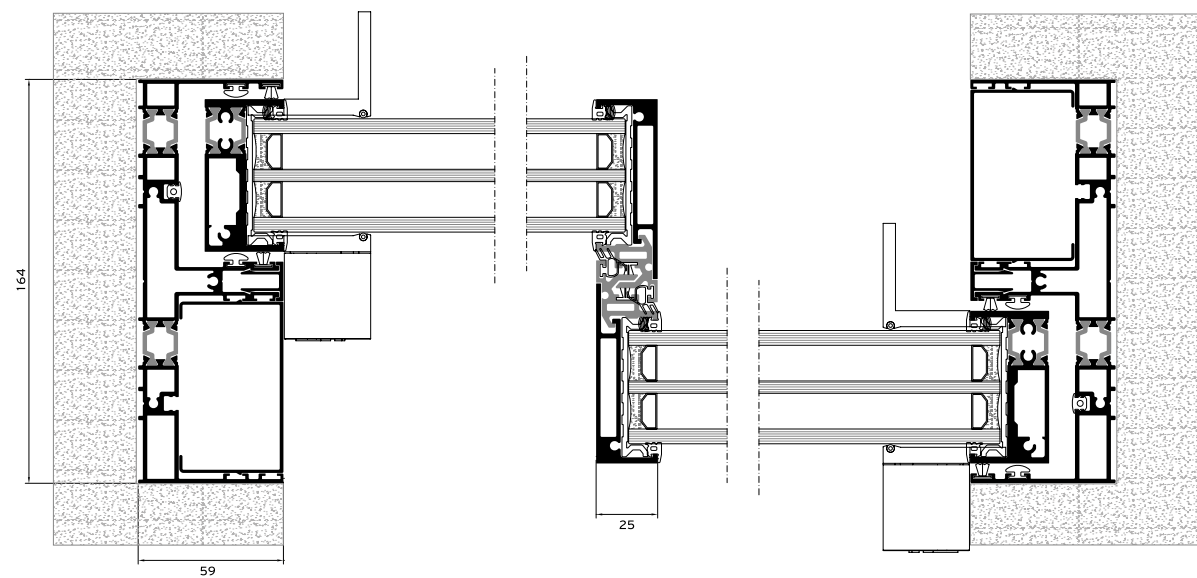
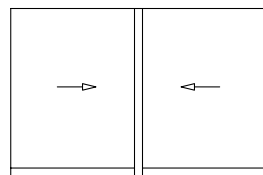
36 / 46 mm

INSULATION

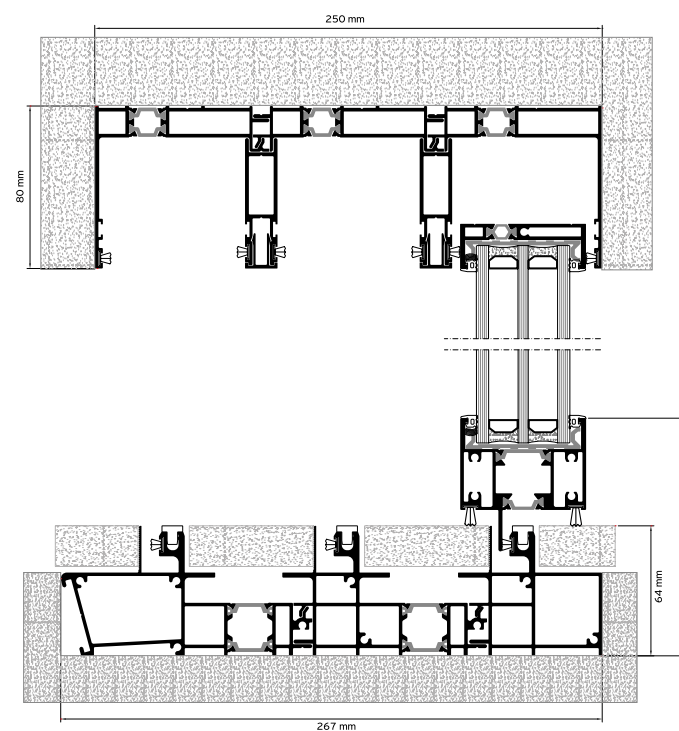
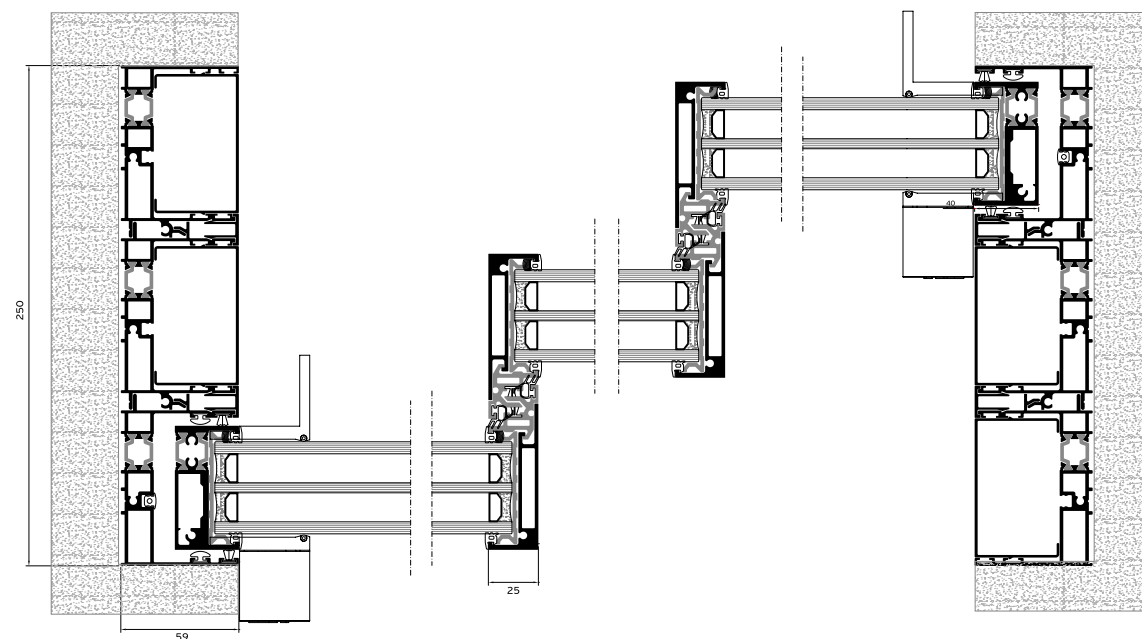
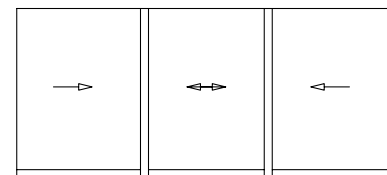
POLYAMIDES, PVC



### 2 Sashes / 2 Track



### 3 Sashes / 3 Track





# Alumil SUPREME

## S650 e-MOTION

### FUNCTIONALITY, CREDIBILITY

### COMFORT

#### AUTOMATED VERSION

The supreme S650 e-Motion is the automated version of the supreme S650 PHOS series.

The elegant design and the electrical automation offering maximum ease of use, make it the perfect solution for projects that require impressive wide spans with uninterrupted view, as well as perfect comfort.

- All the aluminum profiles are totally concealed in-wall so as to maximize natural lighting
- Remote controlled electric motion for ease of use
- Maximum safety through a central control system (motion sensors, electromagnetic locking and fire detection), which is compatible with smart house applications

- Narrow interlocking profile with only 25mm visible aluminum face width
- Can be operated in case of blackout thanks to the integrated rechargeable battery
- Manual operation possible in case of emergency
- Extra concealed profiles available for water drainage

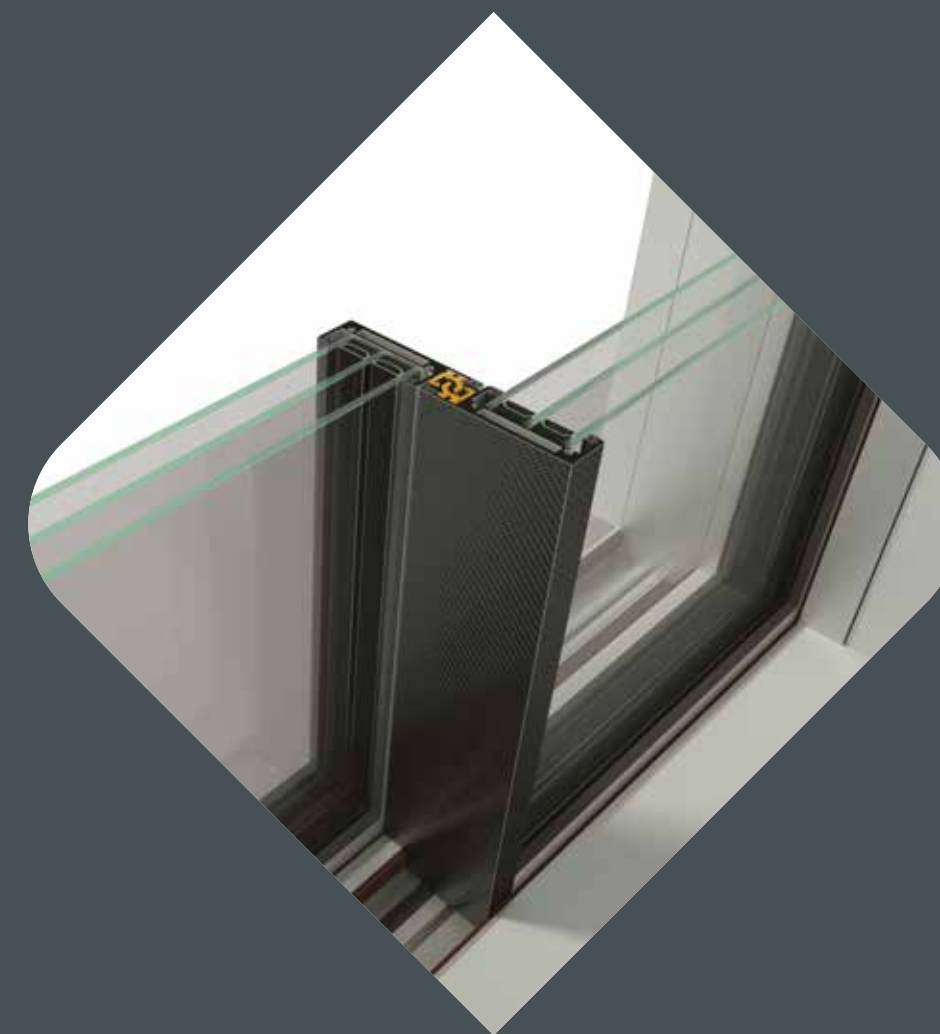




**Alumil** SUPREME  
S650 e-MOTION

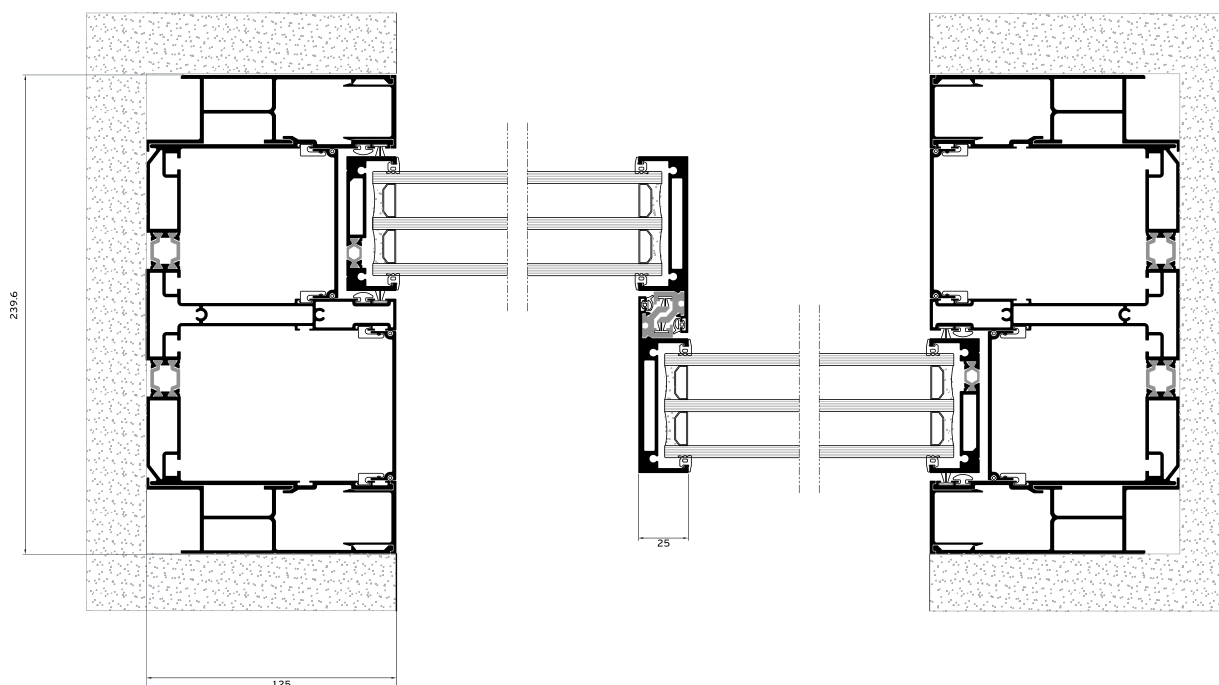
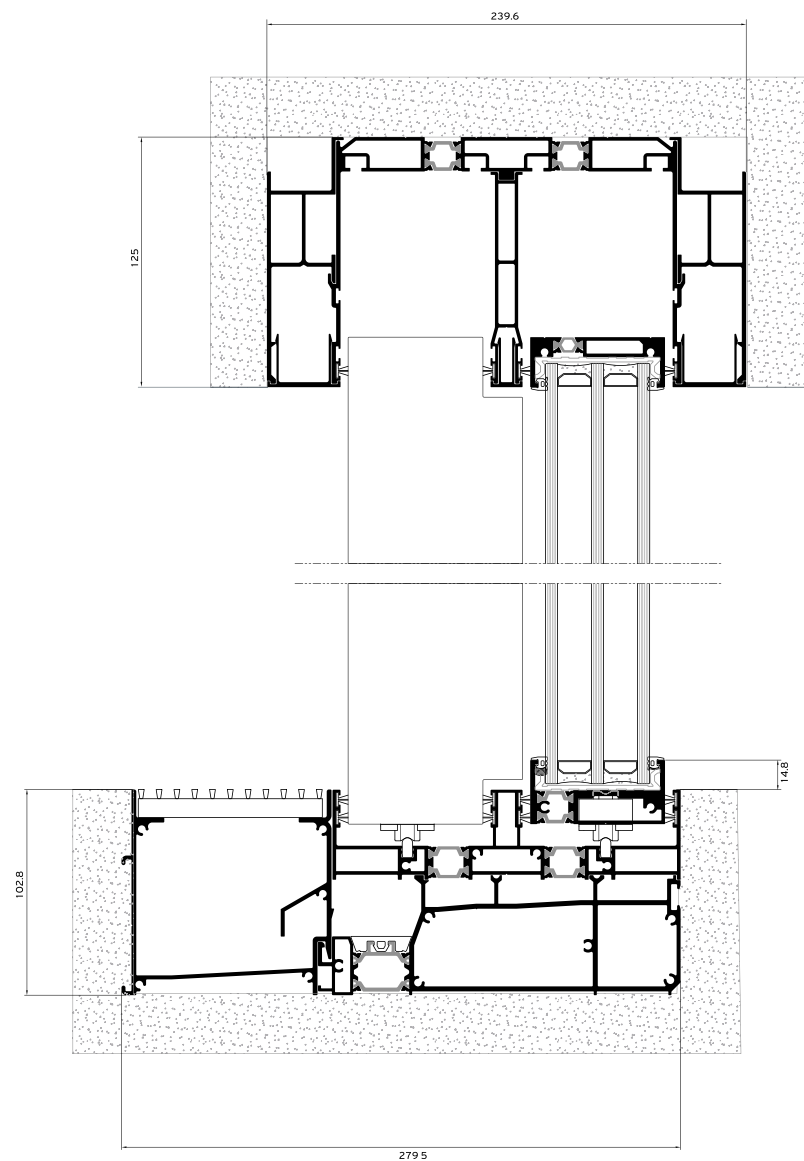
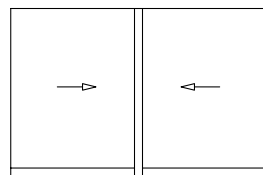
## TECHNICAL

## CHARACTERISTICS

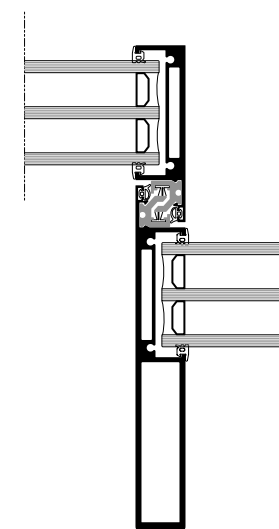


VISIBLE ALUMINIUM FACE WIDTH	CONCEALED PROFILES
FRAME HEIGHT	45 mm
FRAME WIDTH	174 mm
SASH HEIGHTS	25 / 32 mm
SASH WIDTH	67,4 mm
INTERLOCKING PROFILE WIDTH	25 mm
SASH WEIGHT	1000 Kg
GLAZING	36 / 46 mm
INSULATION	POLYAMIDES, PVC

# 2 Sashes / 2 Track



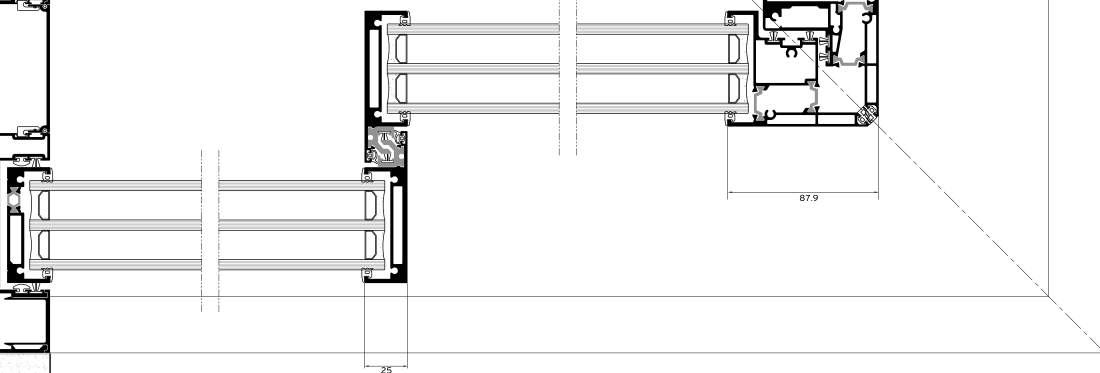
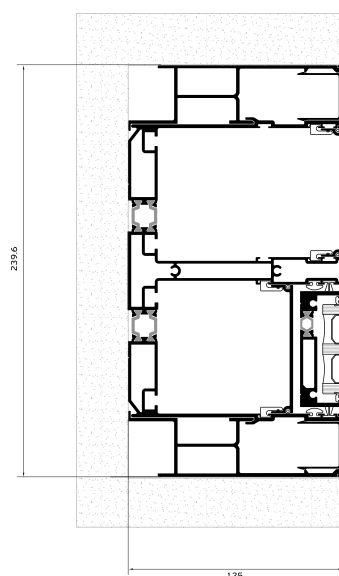
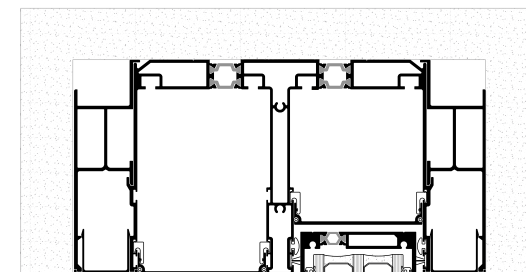
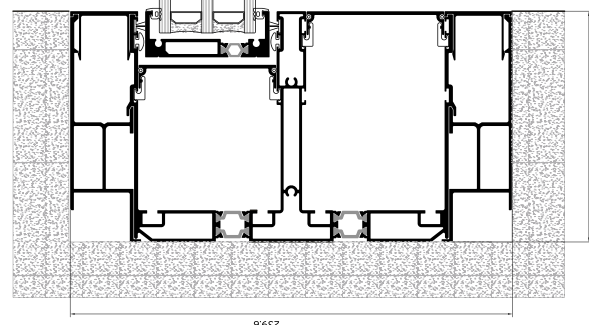
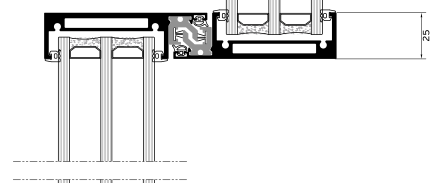
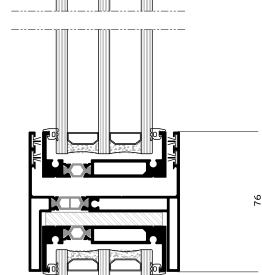
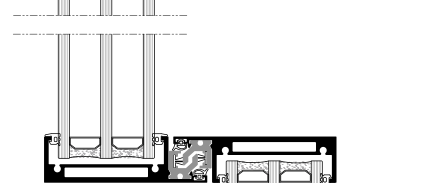
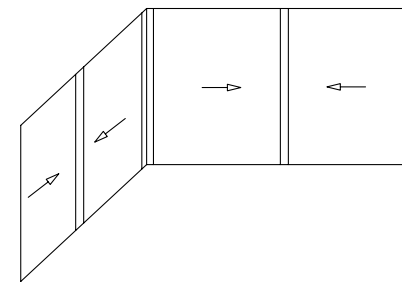
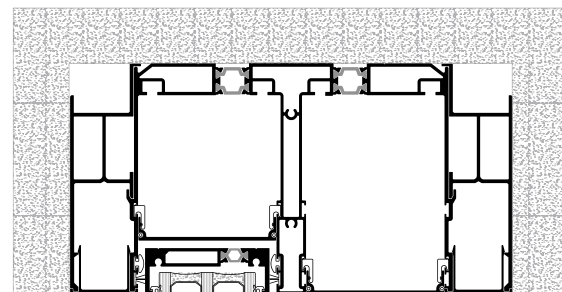
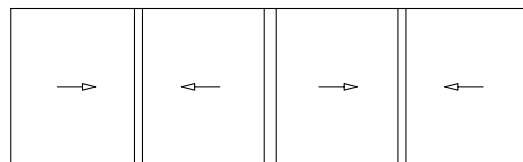
ALTERNATIVE





### 4 Sashes / 2 Track

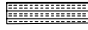

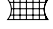
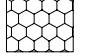
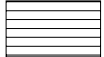

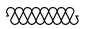
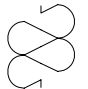
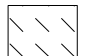

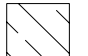

### EXTERNAL CORNER



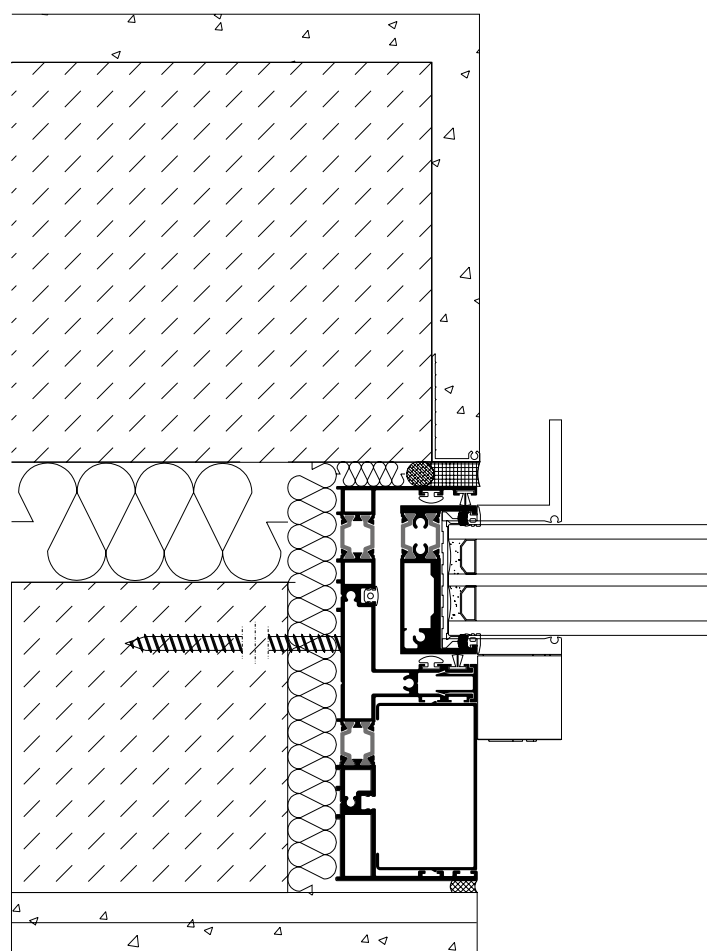
90° Rotate the technical drawing 90° CLOCKWISE IN ORDER TO READ IT PROPERLY

# Installation

**Alumil** SUPREME  
S650 PHOS

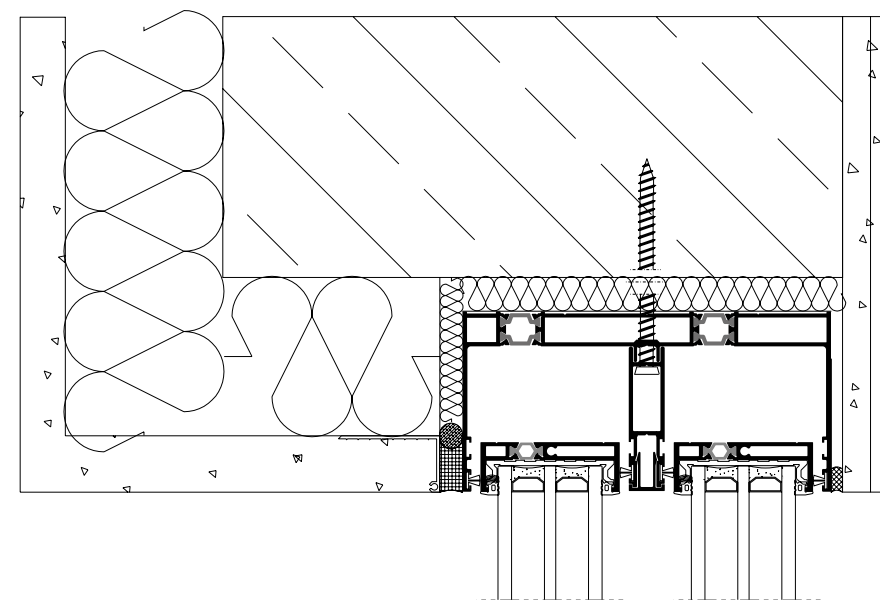
-  PRECOMPRESSED MULTI-FUNCTION SEALING TAPE
-  BACKER ROD
-  HYBRID SEALANT OR NEUTRAL SILICONE
-  STYRODUR HIGH DENSITY BOARD
-  TILES
-  MARBLE
-  POLYURETHANE FOAM
-  POLYSTYRENE
-  WALL CONSTRUCTION
-  WALL FINISH
-  REINFORCED CONCRETE
-  AIR WATER VAPOR BARRIER TAPE

SIDE SECTION



**Alumil** SUPREME  
S650 PHOS

TOP SECTION

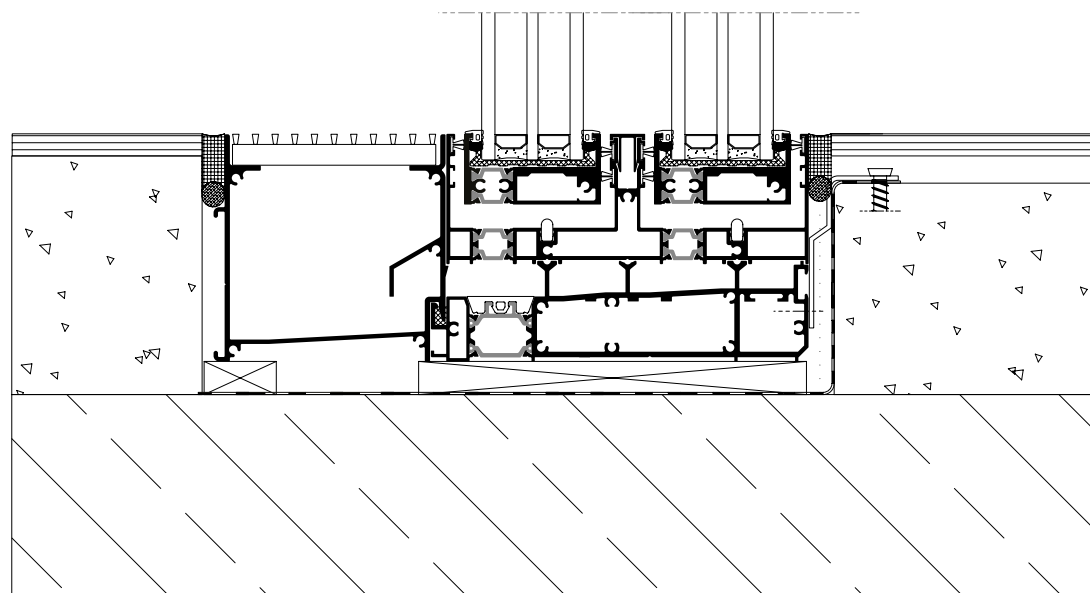




# Installation

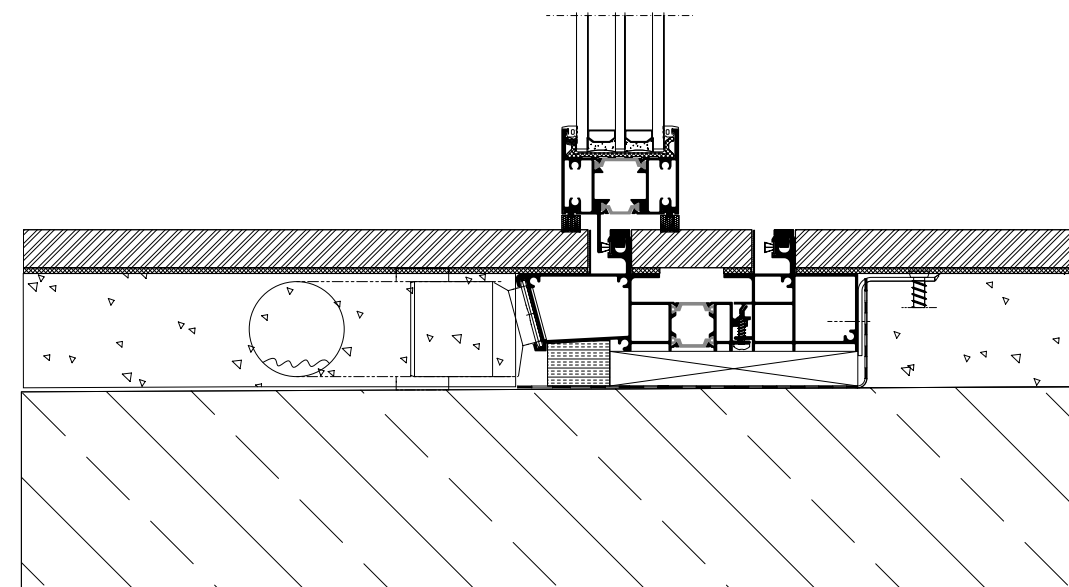
**Alumil** > SUPREME  
S650 PHOS

BOTTOM SECTION WITH GUTTER



**Alumil** > SUPREME  
S650 eclipse

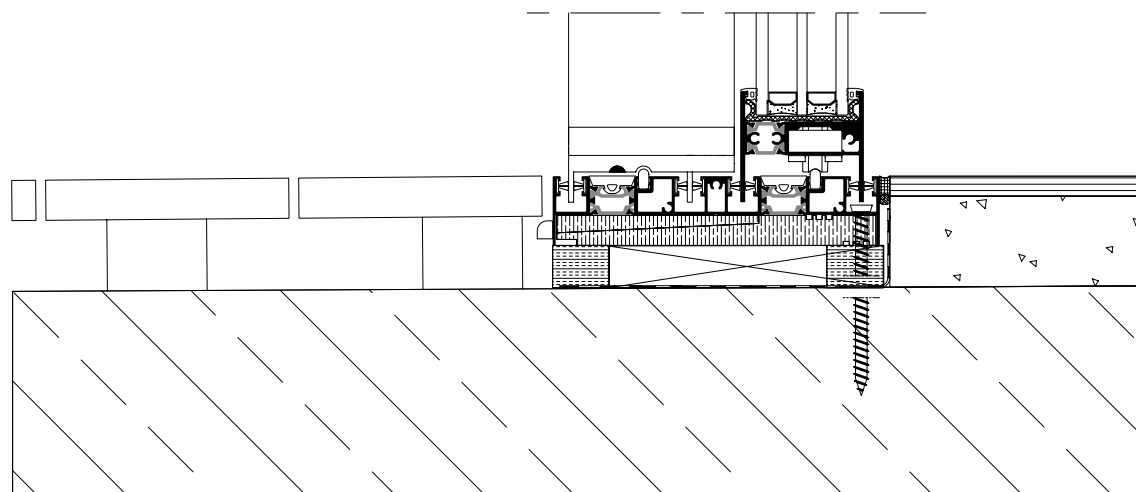
BOTTOM SECTION ECLIPSE



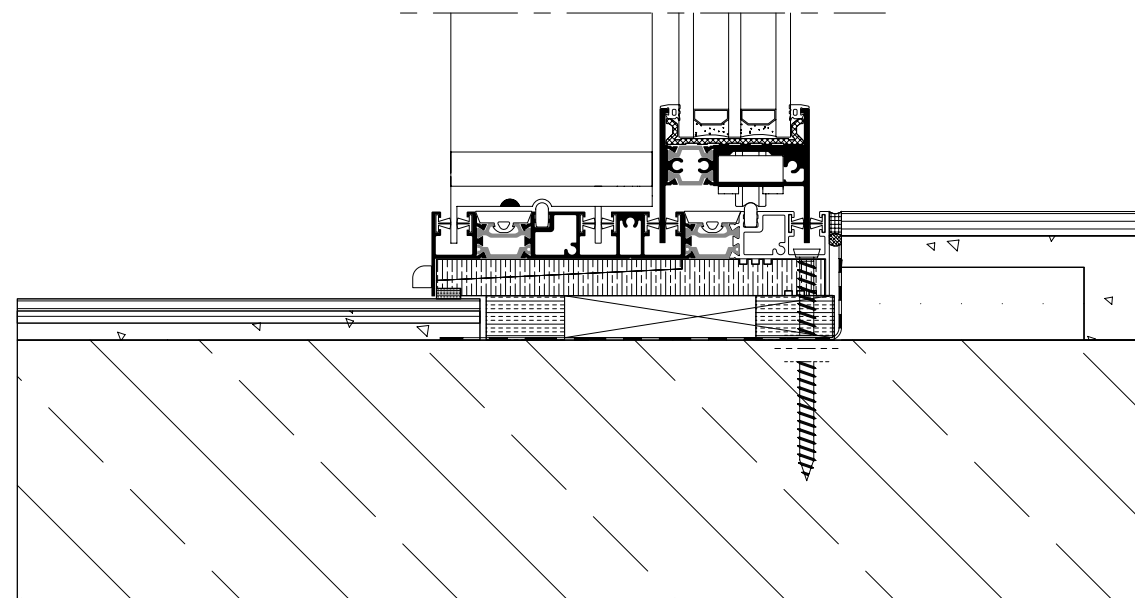
# Installation

**Alumil** > SUPREME  
S650 PHOS

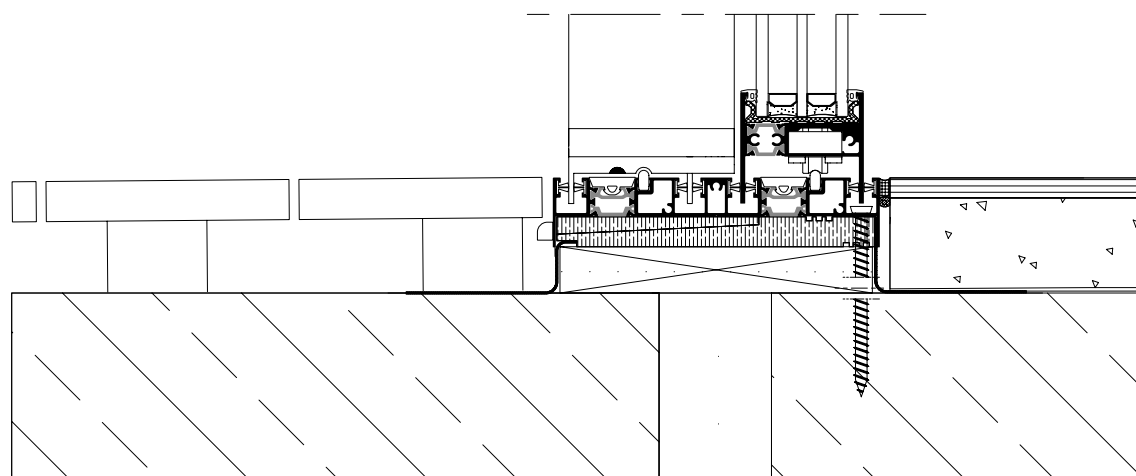
BOTTOM SECTION WITH LOW TRACK A



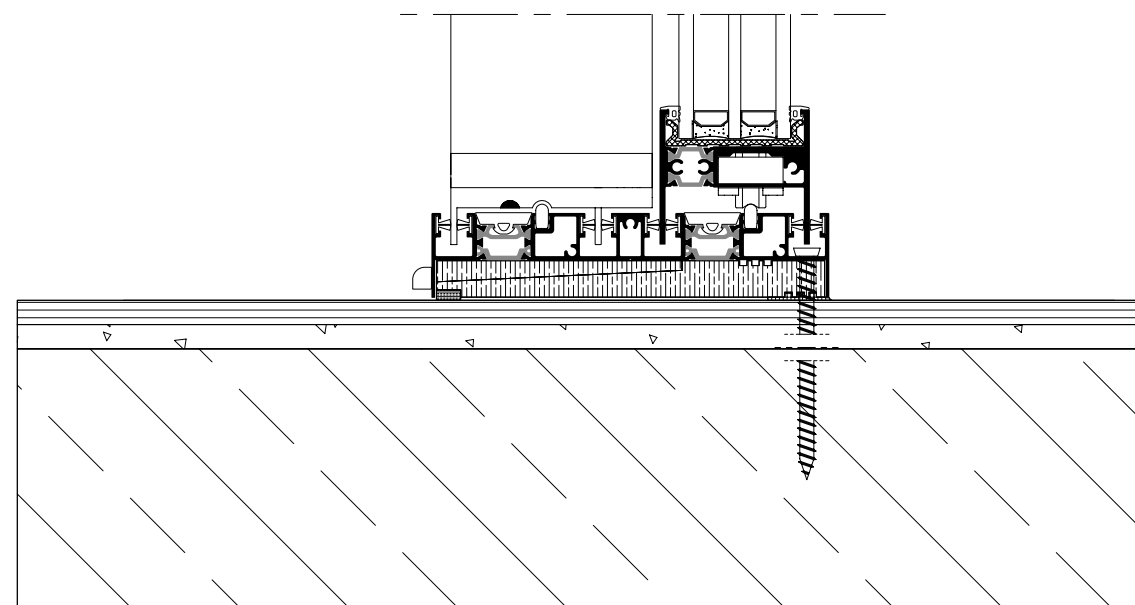
BOTTOM SECTION WITH LOW TRACK C



BOTTOM SECTION WITH LOW TRACK B

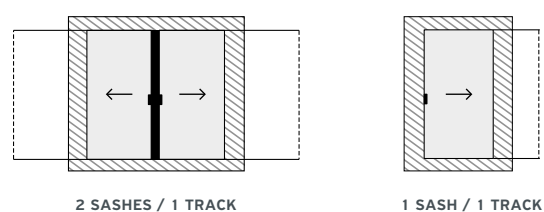
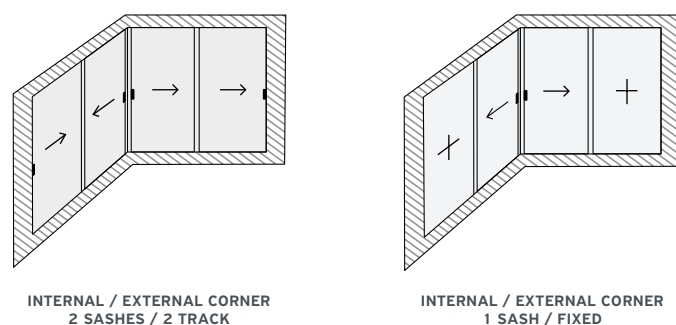
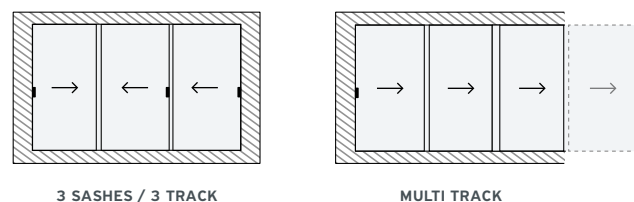
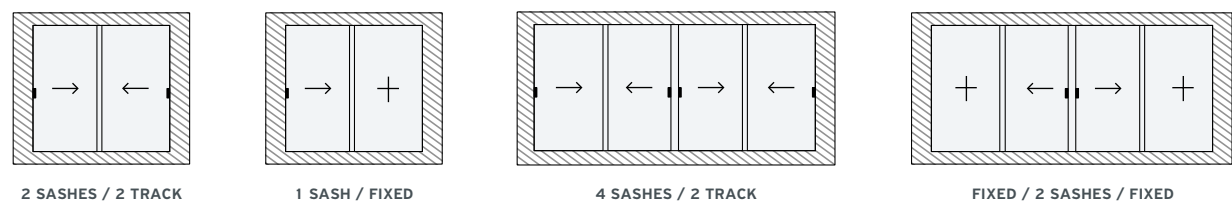


BOTTOM SECTION WITH LOW TRACK D

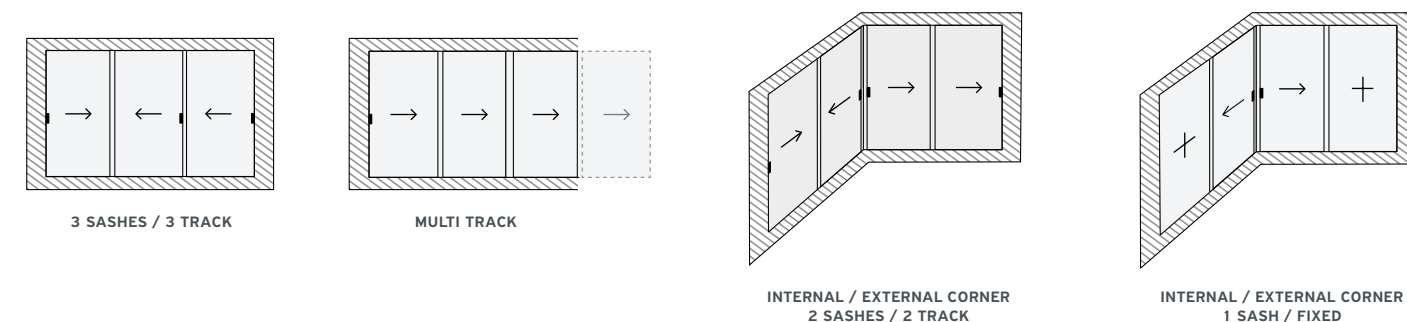
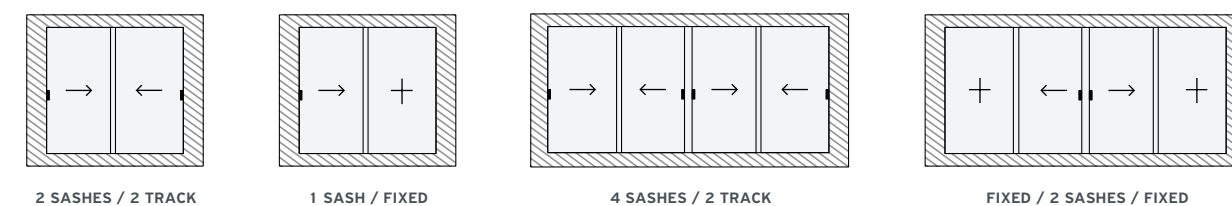


# Applications

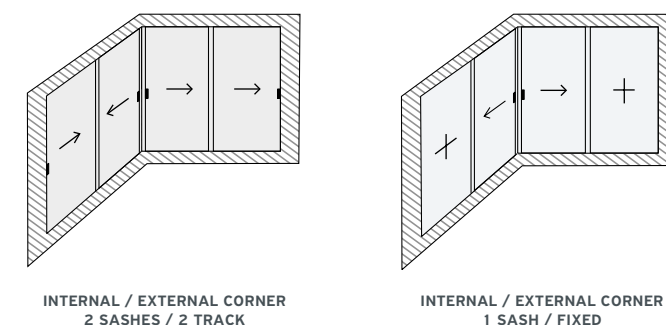
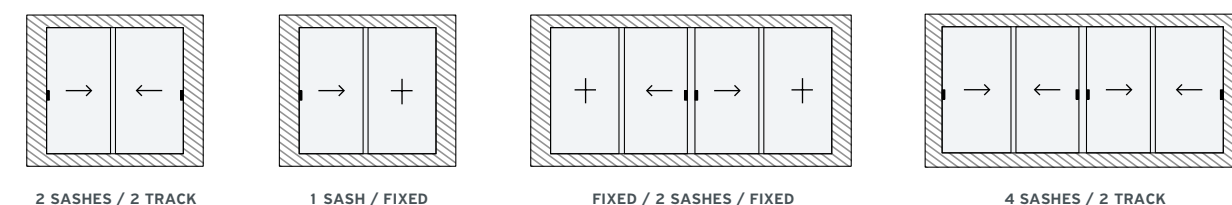
## Alumil SUPREME S650 PHOS



## Alumil SUPREME S650 eclipse









## Alumil SUPREME S650 e-MOTION










# TABLE OF PERFORMANCE

## SUPREME S650 PHOS






CERTIFICATION	CLASSIFICATION									
 <b>WATER TIGHTNESS</b> EN 12208	1A (0 Pa)	2A (50 Pa)	3A (100 Pa)	4A (150 Pa)	5A (200 Pa)	6A (250 Pa)	7A (300 Pa)	8A (450 Pa)	<b>9A</b> (600 Pa)	
 <b>AIR PERMEABILITY</b> EN 12207		1 (150 Pa)		2 (300 Pa)		3 (600 Pa)		4 (600 Pa)		
 <b>WIND RESISTANCE</b> MAX TEST PRESSURE EN 12210	1 (400 Pa)		2 (800 Pa)		3 (1200 Pa)		4 (1600 Pa)		5 (2000 Pa)	
 <b>WIND LOAD RESISTANCE</b> TO FRONTAL DEFLECTION EN 12210	A ( $\leq 1/150$ )			B ( $\leq 1/200$ )			C ( $\leq 1/300$ )			
 <b>SOUND REDUCTION</b> EN14351	41 dB									
 <b>BURGLAR RESISTANCE</b> EN 1627 - 1630	RC 1			<b>RC 2</b>				RC 3		

Alumil has also certified the systems SUPREME S650 according to AAMA & AS standards which are available upon request.

## SUPREME S650 eclipse

CERTIFICATION	CLASSIFICATION									
 <b>WATER TIGHTNESS</b> EN 1208	1A (0 Pa)	2A (50 Pa)	3A (100 Pa)	4A (150 Pa)	5A (200 Pa)	6A (250 Pa)	7A (300 Pa)	8A (450 Pa)	<b>9A</b> (600 Pa)	
 <b>AIR PERMEABILITY</b> EN 12207		1 (150 Pa)		2 (300 Pa)		3 (600 Pa)		4 (600 Pa)		
 <b>WIND LOAD RESISTANCE</b> MAX. TEST PRESSURE EN 12210	1 (400 Pa)		2 (800 Pa)		<b>3</b> (1200 Pa)		4 (1600 Pa)		5 (2000 Pa)	
 <b>WIND LOAD RESISTANCE</b> TO FRONTAL DEFLECTION EN 12210	A ( $\leq 1/150$ )			B ( $\leq 1/200$ )			C ( $\leq 1/300$ )			
 <b>SOUND REDUCTION</b> EN14351	46dB									

## SUPREME S650 e-MOTION

CERTIFICATION	CLASSIFICATION									
 <b>WATER TIGHTNESS</b> EN 12208	1A (0 Pa)	2A (50 Pa)	3A (100 Pa)	4A (150 Pa)	5A (200 Pa)	6A (250 Pa)	7A (300 Pa)	8A (450 Pa)	9A (600 Pa)	<b>E 1050</b> (1050 Pa)
 <b>AIR PERMEABILITY</b> EN 12207		1 (150 Pa)		2 (300 Pa)			<b>3</b> (600 Pa)		4 (600 Pa)	
 <b>WIND RESISTANCE</b> MAX TEST PRESSURE EN 12210	1 (400 Pa)		2 (800 Pa)		<b>3</b> (1200 Pa)		4 (1600 Pa)		5 (2000 Pa)	
 <b>WIND LOAD RESISTANCE</b> TO FRONTAL DEFLECTION EN 12210	A ( $\leq 1/150$ )			B ( $\leq 1/200$ )			C ( $\leq 1/300$ )			
 <b>BURGLAR RESISTANCE</b> EN 1627 - 1630	RC 1			<b>RC 2</b>				RC 3		

THERMAL	DIMENSIONS IN MM (w x h)	U <sub>w</sub> in W/m <sup>2</sup> K (U <sub>g</sub> = 0,6)	U <sub>w</sub> in W/m <sup>2</sup> K (U <sub>g</sub> = 0,8)	U <sub>w</sub> in W/m <sup>2</sup> K (U <sub>g</sub> = 1,1)
2 SASHES / 2 TRACK	2600 x 2400	1,14	1,32	1,59
2 SASHES / 2 TRACK LOW THRESHOLD	2600 x 2400	1,15	1,32	1,59
4 SASHES / 2 TRACK	5200 x 2400	1,12	1,30	1,57

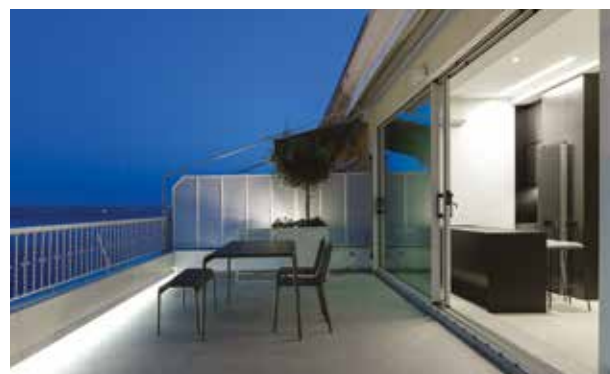
Thermal performance for non-installed frames certified according to EN ISO 10077-2

# REFERENCE PROJECTS

- 1. PRIVATE RESIDENCE / KOS, GREECE
- 2. PRIVATE RESIDENCE / THESSALONIKI, GREECE
- 3. PRIVATE RESIDENCE / ATHENS, GREECE
- 4. SKA VILLA LAGOS / NIGERIA, AFRICA
- 5. PRIVATE RESIDENCE / AEGINA, GREECE
- 6. MAYIA EXCLUSIVE RESORT & SPA / RHODES, GREECE



1



2



4



3



5



6



# REFERENCE PROJECTS

- 7. EL HOUSE / CYPRUS
- 8. H 34 / VOULA, ATHENS
- 9. ALKYONIDES VILLAS / ZANTE, GREECE

- 10. THE LAP POOL HOUSE / TINOS, GREECE
- 11. HAESLEY CONDOMINIUM / SOUTH KOREA
- 12. ARISTOTELOUS RESIDENCE / THESSALONIKI, GREECE



7



10



11



8



9



12



www.alumil.com

**ALUMIL  
MIDDLE EAST DMCC**

Mazaya Business Avenue BB1  
29th Floor, Office #2907  
Jumeirah Lakes Towers, Dubai, UAE  
TEL.: +971 4 4425930  
FAX: +971 4 4416528  
EMAIL: marketing.uae@alumil.com  
[www.alumil.ae](http://www.alumil.ae)

**ALUMIL  
HEADQUARTERS**

Kilkis Industrial Area  
Kilkis - GR 61100  
TEL.: +30 23410 79300  
FAX.: +30 23410 71988  
E-MAIL.: info@alumil.com



**ALUMIL  
MIDDLE EAST DMCC**

MAZAYA BUSINESS AVENUE BB 1  
29TH FLOOR, OFFICE #2907  
JUMEIRAH LAKES TOWERS,  
DUBAI, UAE  
**TEL.:** +971 4 4425930  
**FAX:** +971 4 4416528  
**EMAIL:** marketing.uae@alumil.com

**ALUMIL  
HEAD OFFICES  
& SHOWROOM - THESSALONIKI**

GOGOUSI 8, EFKARPIA  
THESSALONIKI - GR 56429  
**TEL.:** +30 2313 011000  
**FAX:** +30 2310 692473  
**E-MAIL:** info@alumil.com

[www.alumil.ae](http://www.alumil.ae)

The Alumil logo is displayed in white on a dark blue background. It features a stylized 'A' symbol followed by the word 'alumil' in a lowercase, sans-serif font. A small yellow square is positioned above the 'i' in 'alumil'.

**alumil**