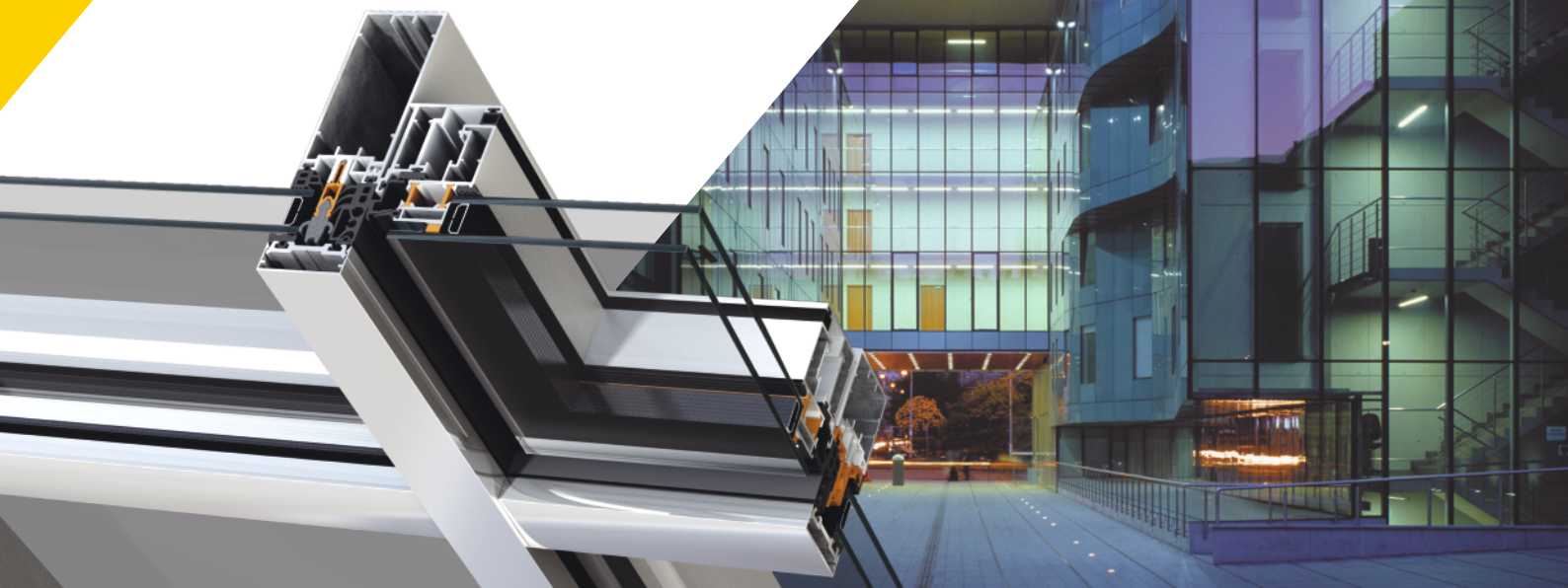


# ALUMIL

## SMARTIA M50



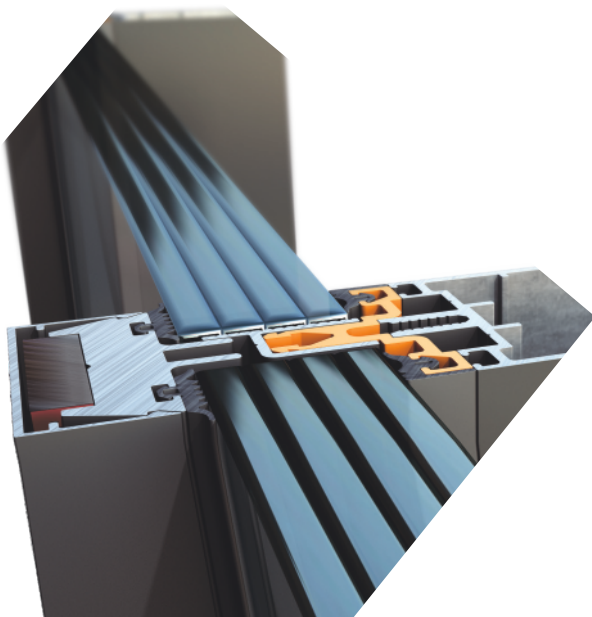
### CURTAIN WALL INSULATED SYSTEM

SMARTIA M50 is a complete Curtain Wall system with high energy efficiency which offers unlimited design solutions able to meet every architectural demand.

- 50mm width of mullions and transoms.
- High thermal insulation thanks to special insulating material.
- Usage of same profile for both mullion and transom
- Flat internal sightline achieved with the usage of same profile for both mullion and transom.
- Concealed drainage for maximum sealing.
- Incorporation of SMARTIA M5600 solar shading system
- Compatible with all Hinged Systems (Phos included) of ALUMIL.
- Compatible with all Entrance Door Systems of ALUMIL.
- Silicone Structural Glazing typologies, using same profile of mullion and transom, can be achieved.

### Exterior aesthetics

With Horizontal and Vertical cover (standard).  
Structural (glass only).

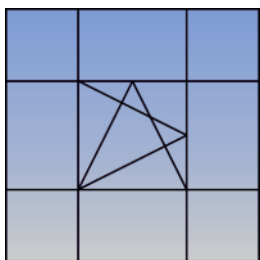




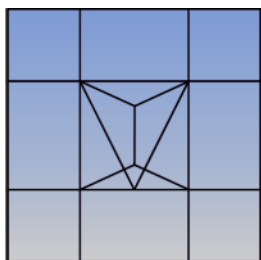
### TECHNICAL CHARACTERISTICS

|                        |   |
|------------------------|---|
| Exterior visible width | 50 mm   |
| Mullion depth          | 12 - 234 mm                                       |
| Transom depth          | 12 - 234 mm                                       |
| Glazing                | Stick type with EPDM gaskets                      |
| Glass thickness        | 24 - 42 mm  |
| Mullion max inertia    | $I_x = 1300 \text{ cm}^4$ $I_y = 79 \text{ cm}^4$ |
| Transoms max inertia   | $I_x = 1300 \text{ cm}^4$ $I_y = 79 \text{ cm}^4$ |

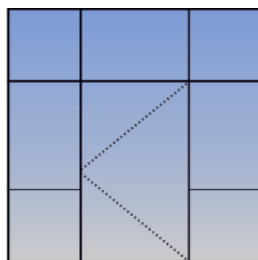
### TYOLOGIES



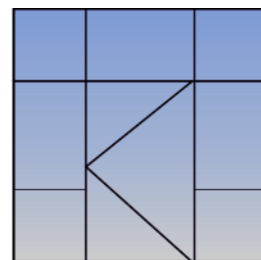
Tilt and turn vent window  
Tilt and turn vent conceal window



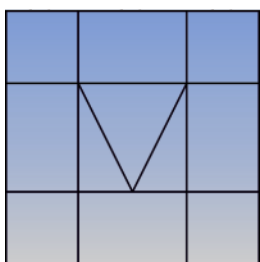
Parallel and projected  
outward window



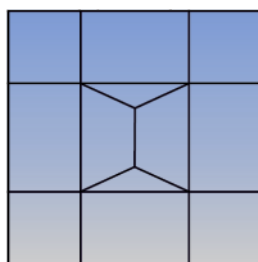
Hinged opening outward door



Hinged opening inward door



Projected outward window



Parallel projected outward window

### ΠΙΣΤΟΠΟΙΗΤΙΚΑ

|  |                                   |                                     |
|--|-----------------------------------|-------------------------------------|
|  | Air Permeability EN 12152         | CLASS AE                            |
|  | Watertightness EN 12154           | CLASS R7                            |
|  | Resistance to Wind Load EN 13116  | $\pm 2 \text{ KN/m}^2$              |
|  | Thermal Insulation EN 12412-2     | $U_f = 1-1,8 \text{ W/m}^2\text{K}$ |
|  | Burglar Resistance EN 1627 - 1630 | RC3                                 |
|  | Sound Reduction EN 13830          | $R_w (C;Ctr) = 47 \text{ dB}$       |

