

Alumil

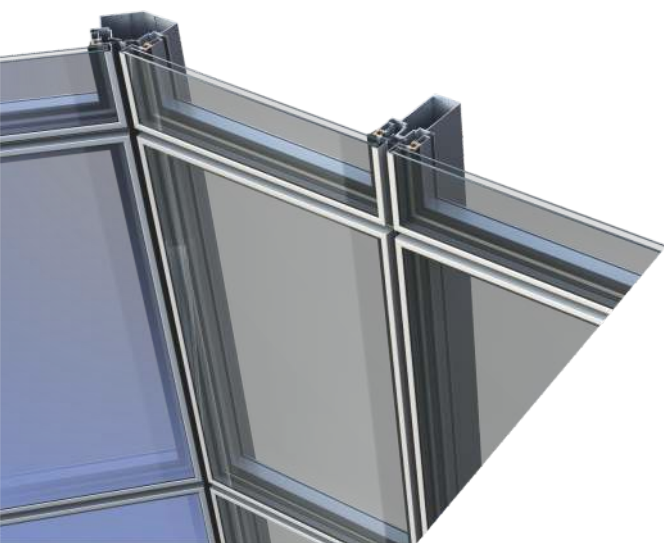
COMFORT M3



CURTAIN WALL INSULATED SYSTEM

COMFORT M3 is a thermal insulated system for semi-structural curtain walls with hanging frames (stick type) for faster installation.

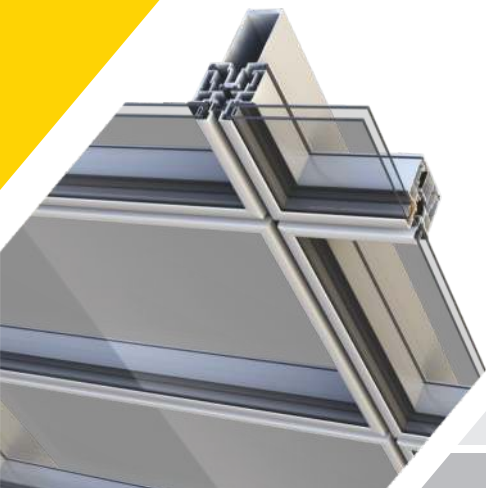
- 55 mm width of mullions.
- Visible aluminium frame width of 14 mm.
- Vents hold the glass, leaving a 16 mm visible aluminium strip around the glass.
- Vents are supported by the mullions on which they are attached by means of special hardware, which secure the frame on the curtain wall structure.
- The same vents can be either fixed or projected outwards (windows parallel projected or top hung).
- Big variety of columns for high wind loads.
- Polygonal surfaces are possible.
- Can be combined with doors from the SMARTIA series.
- Very easy installation.
- Certified by AAMA.



Exterior aesthetics

With horizontal and vertical cover (Standard).

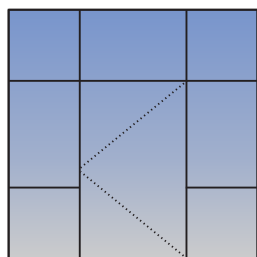




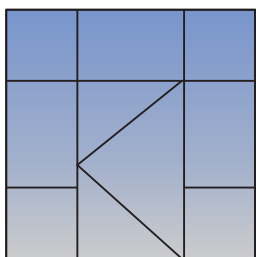
TECHNICAL CHARACTERISTICS

| | |
|------------------------|--|
| Exterior visible width | 55 mm |
| Mullion depth | 49 – 139 mm |
| Transom depth | 47 – 154 mm |
| Glazing | Seamless aluminium frame with EPDM gaskets |
| Glass thickness | 5 – 38 mm |
| Mullions max inertia | $I_x=501 \quad I_y=64 \text{ cm}^4$ |
| Transoms max inertia | $I_x=68 \quad I_y=36 \text{ cm}^4$ |

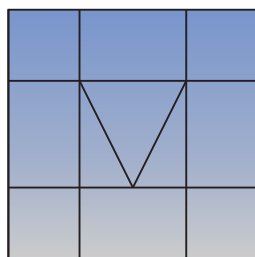
TPOLOGIES



Hinged opening
outward door



Hinged opening
inward door



Projected
outward window

CERTIFICATES

| | | |
|--|----------------------------------|-----------------------------------|
| | Air permeability EN 12152 | CLASS 4 |
| | Watertightness EN 12154 | CLASS R6 |
| | Resistance to wind load EN 13116 | $\pm 2,0 \text{ kN/m}^2$ |
| | Thermal Insulation EN 12412-2 | $U_f = 3,7 \text{ W/m}^2\text{K}$ |